

Series PL directly operated solenoid valves

New

3/2-way NC. These solenoid valves can be mounted on a single base (with M5 ports) as well as on manifolds (with M5 ports or cartridge ø 3 and 4).



Note: all Series PL 3-way solenoid valves are basically in DC.
To operate in AC at the same target voltage, the valves need to use the connector Mod. 125-900.

Series PL directly operated mini-solenoid valves are available in the NC version and can be mounted on single bases or on manifolds.

GENERAL DATA

TECHNICAL FEATURES

Function	3/2 NC
Operation	direct acting poppet type
Pneumatic connections	on subbase by means of M3 screws
Nominal diameter	1.5 mm
Nominal flow	24 ... 35 NI/min (air @ 6 bar ΔP 1 bar)
Kv (l/min)	0.54
Operating pressure	-0.9 ÷ 3 ... 8 bar
Operating temperature	0 ÷ +50°C
Media	filtered air, class 5.4.4 according to ISO 8573-1 (max oil viscosity 32 cSt), inert gas
Response time	ON <10 msec - OFF <15 msec
Installation	in any position

MATERIALS IN CONTACT WITH THE MEDIUM

Body	PBT technopolymer
Seals	FKM, NBR
Internal parts	stainless steel, NBR

ELECTRICAL FEATURES

Voltage	24 V DC - 12 V DC - other voltages on demand
Voltage tolerance	±10%
Power consumption	2.7 W
Duty cycle	ED 100%
Electrical connection	DIN 43650 connector, (C Shape), 9.4 mm
Protection class	IP65 with connector

Special versions available on demand

2

CONTROL

CODING EXAMPLE

PL	0	00	-	3	0	3	-	PL	2	3
----	---	----	---	---	---	---	---	----	---	---

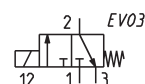
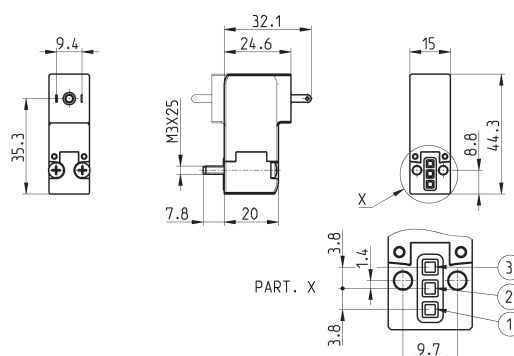
PL	SERIES
0	BODY DESIGN: 0 = single sub-base (M5 only) or interface 1 = single manifold 2 = double sided manifold
00	NUMBER OF POSITIONS: 00 = interface 01 = single base (M5 only) 02 + 99 = manifold number of positions
3	NUMBER OF WAYS - FUNCTIONS: 0 = manifold or single base 3 = 3-way NC 5 = 3-way NC electric part revolved by 180°
0	VALVE PORTS: 0 = interface (for single valve only) MANIFOLD PORTS: 2 = M5 side port 3 = ø 3 tube side port 4 = ø 4 tube side port 6 = M5 rear ports 7 = ø 3 tube rear ports 8 = ø 4 tube rear ports
3	NOMINAL DIAMETER 3 = ø 1,5 6 = ø 1,5 NC (for use with vacuum)
PL	MATERIALS: PL = technopolymer PBT body, FKM poppet seal, other seals in NBR
2	ELECTRICAL CONNECTION: 2 = 2 faston pitch 9,4
3	SOLENOID VOLTAGE: 2 = 12V DC 3 = 24V DC

3/2-way NC solenoid valve

Supplied with:
1x interface seal
2x screws



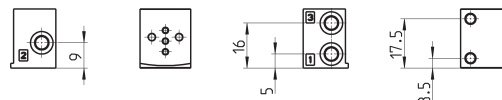
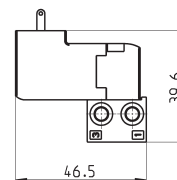
New



Mod.	Orifice Ø (mm)	Qn (Nl/min)	Pressure min-max (bar)
PL000-303-PL23	1.5	35	3 ÷ 8
PL000-503-PL23	1.5	35	3 ÷ 8
PL000-306-PL23	1.5	24 *	-0.9 ÷ 3
PL000-506-PL23	1.5	24 *	-0.9 ÷ 3

* flow measurement at 3 bar ΔP1

Single sub-base



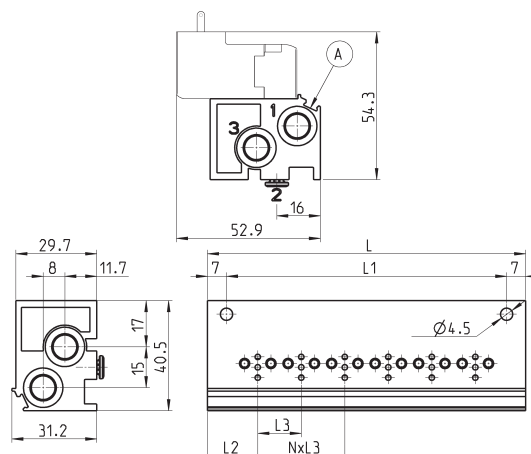
Mod.

P001-02

2

CONTROL

Single manifold with rear outlets



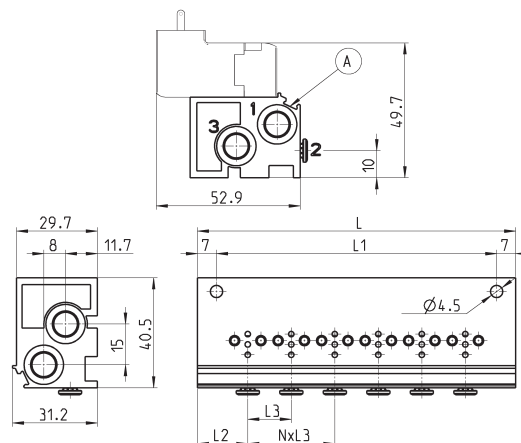
Mod.	Nr valves	L	L1	L2	L3	1 (P)	3 (R)
P102-0*	2	53	39	18,5	16	G1/8	G1/8
P103-0*	3	69	55	18,5	16	G1/8	G1/8
P104-0*	4	85	71	18,5	16	G1/8	G1/8
P105-0*	5	101	87	18,5	16	G1/8	G1/8
P106-0*	6	117	103	18,5	16	G1/8	G1/8

* = see the type of PORTS in the CODING EXAMPLE TABLE.

A = groove for electric connection identification

Single manifold with front outlets

This manifold is arranged to be fixed through DIN 46277/3 guide together with the accessory PCF-E520.

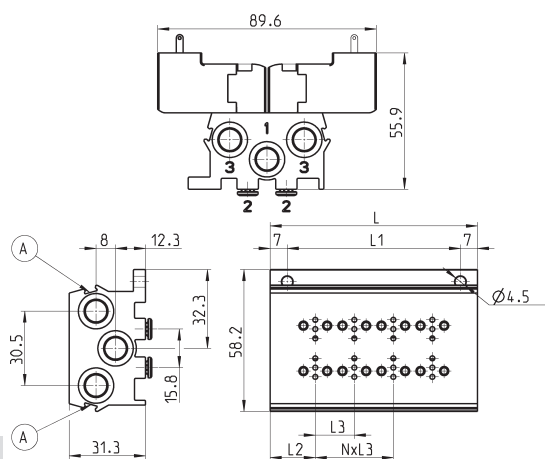


Mod.	Nr valves	L	L1	L2	L3	1 (P)	3 (R)
P102-0*	2	53	39	18,5	16	G1/8	G1/8
P103-0*	3	69	55	18,5	16	G1/8	G1/8
P104-0*	4	85	71	18,5	16	G1/8	G1/8
P105-0*	5	101	87	18,5	16	G1/8	G1/8
P106-0*	6	117	103	18,5	16	G1/8	G1/8

* = see the type of PORTS in the CODING EXAMPLE TABLE.

A = groove for electric connection identification

Double sided manifold with rear outlets



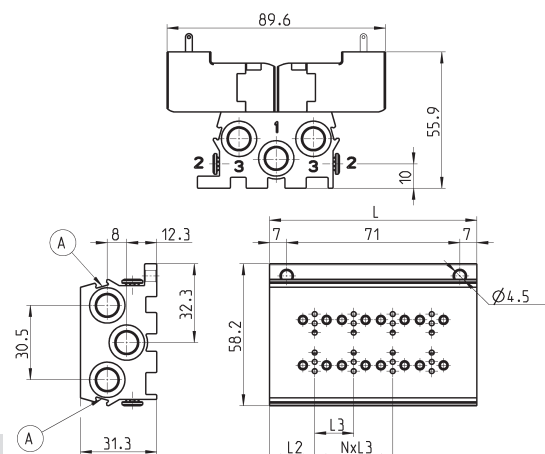
Mod.	Nr valves	L	L1	L2	L3	1 (P)	3 (R)
P204-0*	4	53	39	18,5	16	G1/8	G1/8
P206-0*	6	69	55	18,5	16	G1/8	G1/8
P208-0*	8	85	71	18,5	16	G1/8	G1/8
P210-0*	10	101	87	18,5	16	G1/8	G1/8
P212-0*	12	117	103	18,5	16	G1/8	G1/8

* = see the type of PORTS in the CODING EXAMPLE TABLE.

A = groove for electric connection identification

Double sided manifold with front outlets

This manifold is arranged to be fixed through DIN 46277/3 guide together with the accessory PCF-E520.



Mod.	Nr valves	L	L1	L2	L3	1 (P)	3 (R)
P204-0*	4	53	39	18,5	16	G1/8	G1/8
P206-0*	6	69	55	18,5	16	G1/8	G1/8
P208-0*	8	85	71	18,5	16	G1/8	G1/8
P210-0*	10	101	87	18,5	16	G1/8	G1/8
P212-0*	12	117	103	18,5	16	G1/8	G1/8

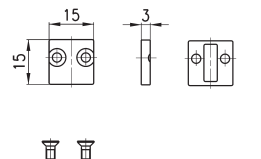
* = see the type of PORTS in the CODING EXAMPLE TABLE.

A = groove for electric connection identification

Excluder tap



Supplied with:
1x excluder tap
1x interface seal
2x screws



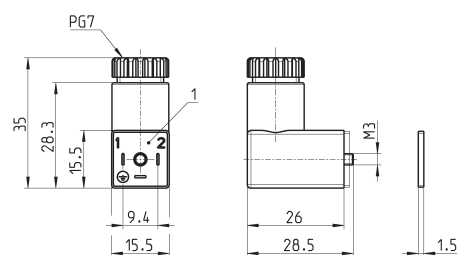
Mod.

P000-TP

2

CONTROL

Connector Mod. 125-800 DIN 43650 pin spacing 9,4mm



Mod.

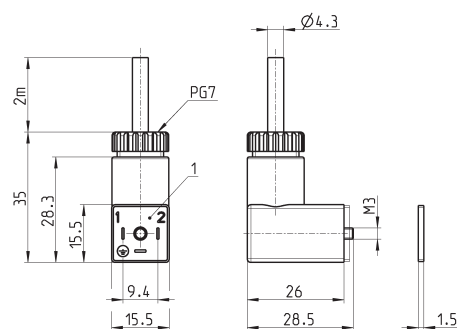
125-800

1 = 90° adjustable connector

Connector Mod. 125-900 DIN 43650 pin spacing 9,4mm



The internal rectifier circuit of this connector allows to use solenoid valves with different AC voltage, even if the voltage indicated on the solenoid valve is DC.



Mod.

125-900

1 = 90° adjustable connector