



Catalogue
Series 9000 C-Truck fittings





Solutions for mobile automation

C_Transport

The transport sector is growing continuously and being driven by a demand for solutions that are increasingly complex and unique. Camozzi realized its own internal C_Transport division, in which technicians and Business Development Managers work in partnership with the client to study the applications even in environmental conditions which are characterized by extreme pressures or temperatures, in which external stress may affect the performances of the components.

The range of Series 9000 C-Truck fittings has been designed and developed to ensure high reliability and safety in the pneumatic braking systems on industrial and commercial vehicles.



Series 9000 C-Truck fittings

| | | | | | | | |
|---|---|---|--|--|---|--|---|
| Mod. 9512 Page 4  | Mod. D6512 Page 5  | Mod. 9510 Page 5  | Mod. 9463 Page 5  | Mod. 9502 Page 6  | Mod. 9500 Page 7  | Mod. 9412 Page 7  | Mod. 9410 Page 7  |
| Mod. 9422 Page 8  | Mod. 9420 Page 8  | Mod. 9580 Page 9  | Mod. 9590 Page 9  | Mod. 9592 Page 9  | Mod. 9540 Page 10  | Mod. D2512 D2502 Page 10  | Mod. D2022 Page 10  |
| Mod. D2062 Page 11  | Mod. D2072 Page 11  | Mod. D2003 Page 11  | Mod. 9450 Page 12  | Mod. 9402 Page 12  | Mod. D2003 S01 Page 12  | Mod. D2032 Page 13  | Mod. D2077 Page 13  |
| Mod. D3043 Page 13  | Mod. D2602 Page 14  | Mod. D2612 Page 14  | Mod. VPC Page 14  | Mod. VDC Page 15  | Mod. V604 Page 15  | Mod. TRN Page 16  | Mod. DRK Page 16  |
| Mod. PNZ Page 16  | Mod. PNZP Page 16  | TRUCK-DCASE/9000 Page 17  | | TRUCK-DCASE/6000 Page 17  | | TRUCK-DCASE/9000+6000 Page 17  | |

For further information about availability and delivery times, we kindly suggest you to contact our sales network available on www.camozzi.com.

Series 9000 C-Truck fittings

For polyamide tubes with external diameter:
4, 6, 8, 10, 12, 15, 16 and 18 mm



Series 9000 C-Truck fittings have been designed to connect tubes in the pneumatic braking systems on industrial and commercial vehicles, thus ensuring reliability and ease of assembling. The use of a proper disconnection tool enables to disconnect the tube without having to remove the fitting. All fittings have a protective cap that keeps humidity and dirt away from the collet.

A reinforced insert enables to keep the dimensions of the tube constant, thus ensuring a tight and safe connection even in case of high changes in temperature. Indeed, C-Truck fittings can be used at extreme temperatures (from -50°C to +100°C). They are assembled according to a precise angle and supplied with a locking nut and a self sealing O-ring. The O-ring on the thread is set in a special groove of the threaded part, ensuring there is no damage during assembly.

The body in brass guarantees a high resistance to corrosion, whilst O-ring and protective cap are made from a rubber

which is resistant to oils. Even though the working pressure depends on the tube used, its maximum value is 16 bar. All fittings are supplied pre-assembled and are therefore ready to use.

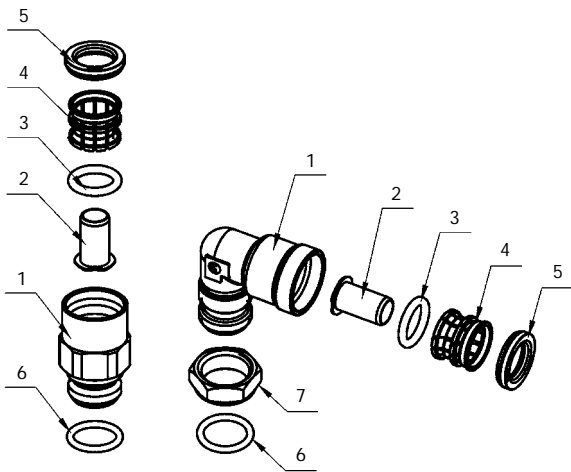
- » DIN 74324:1996
- » DIN EN ISO 9227:2006
- » DIN EN 60068-2-6:1996
- » GOST R 51190-98

GENERAL DATA

| | |
|---------------------------------|--|
| Materials | see the table on the next page |
| Thread | Metric NPTF |
| Media | Compressed air |
| Maximum working pressure | 16 bar Note: pressure depends on tube characteristics |
| Temperature | -50°C + +100°C (see tube characteristics) |
| Tube | Material: Polyamide Tube diameters (D/d): 4/2, 6/4, 8/6, 10/7, 10/8, 12/9, 15/11, 15/12, 16/12, 16/13 and 18/14 |

Other models are available upon request. For further information we suggest you to contact directly our technical office at Lumezzane plant.

TABLE OF MATERIALS



| PARTS | MATERIALS |
|-----------------------|--|
| 1 = Body | Brass |
| 2 = Insert | Technopolymer (Brass only for Ø10/7, 15/11, 16/12, 16/13 and 18/14) |
| 3 = S-rapid O-Ring | NBR |
| 4 = Collet | Brass |
| 5 = Protective seal | NBR |
| 6 = O-Ring for thread | NBR |
| 7 = Locking ring | Steel |

FITTINGS ASSEMBLY IN THE SYSTEM

To guarantee the tightening of the fitting in the system, make sure that the thread chamfer conforms to the standard ISO 965 or GOST 10549-80.

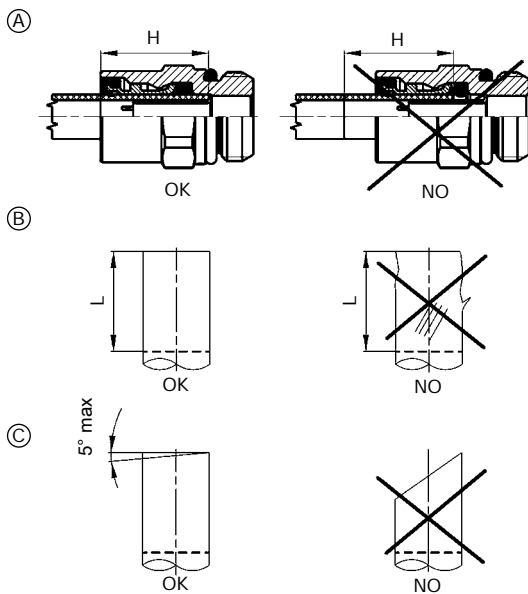
The fittings which have an O-Ring seal on the thread, but no locking nut, have to be screwed into the system with the torque forces as shown in the table below.

For the assembly of fittings with locking nut, it is necessary to do the following:

1. loosen the locking nut
2. screw the fitting into the system until the O-ring comes into contact with the system surface
3. position the fitting according to the suitable angle, moving the body up to 360°
4. keep the body still
5. screw the locking nut with torque forces as shown in the table

| Thread | Torque force (Nm) |
|---------|-------------------|
| M10X1 | 11 - 15 |
| M12X1.5 | 15 - 19 |
| M14X1.5 | 19 - 23 |
| M16X1.5 | 24 - 30 |
| M18X1.5 | 27 - 33 |
| M22X1.5 | 36 - 44 |

ASSEMBLY AND DISASSEMBLY OF THE TUBE INTO THE FITTING



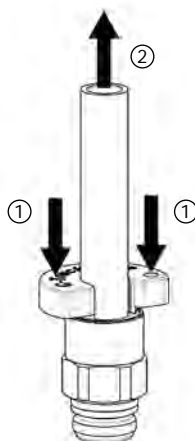
The tube needs to be inserted into the fitting up to the insert stop (A) for the whole length H. It is recommended that you mark the tube to indicate that it has been fully inserted into the fitting.

To guarantee the tube seal with the fitting, it is necessary that the end of the tube that has been inserted for the whole length L is free from any form of damage (B).

To cut the tube end properly, it is recommended that you use the tube cutting tool mod. PNZ.

The angle between the tube and the fitting should not be greater than 5° (C).

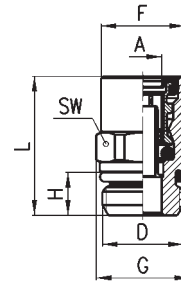
| Tube Outer/Inner diameter | Assembly length H (mm) | Insert length L (mm) |
|---------------------------|------------------------|----------------------|
| 4/2 | 18.5 | 9.5 |
| 6/4 | 17.5 | 9.5 |
| 8/6 | 19.5 | 9.5 |
| 10/7 | 21 | 11 |
| 10/8 | 21 | 11 |
| 12/9 | 21.5 | 11 |
| 15/11 | 25 | 11.5 |
| 15/12 | 25 | 11.5 |
| 16/12 | 27.5 | 13 |
| 16/13 | 27.5 | 13 |
| 18/14 | 27.5 | 13 |



To disconnect the tube it is necessary to push the fittings protective cap using the special disconnection tool (1). First make sure there is no air present inside and then press the protective cap in towards the fittings body (2).

The tube can then be removed from the fitting. Tube assembly and disassembly must be carried out by a technician who has a detailed knowledge of the fittings construction.

Straight fittings Mod. 9512

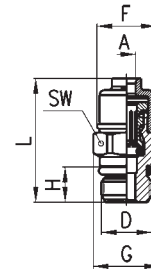


DIMENSIONS

| Mod. | A | D | F | G | H | L | SW | Weight (g) | Package (pcs) |
|--------------------|-------|---------|------|------|-----|------|----|------------|---------------|
| 9512 6-M10x1 | 6/4 | M10x1 | 13.8 | 15 | 7 | 27.5 | 14 | 18 | 10 |
| 9512 6-M12x1,5 | 6/4 | M12x1,5 | 13.8 | 15 | 8.5 | 26 | 14 | 17 | 10 |
| 9512 6-M14x1,5 | 6/4 | M14x1,5 | 13.8 | 15 | 8.5 | 25 | 14 | 18 | 10 |
| 9512 6-M16x1,5 | 6/4 | M16x1,5 | 13.8 | 17 | 8.5 | 19.5 | 14 | 18 | 10 |
| 9512 8-M10x1 | 8/6 | M10x1 | 16.5 | 18.5 | 7 | 30 | 17 | 27 | 10 |
| 9512 8-M12x1,5 | 8/6 | M12x1,5 | 16.5 | 18.5 | 8.5 | 30.5 | 17 | 27 | 10 |
| 9512 8-M14x1,5 | 8/6 | M14x1,5 | 16.5 | 18.5 | 8.5 | 27.5 | 17 | 25 | 10 |
| 9512 8-M16x1,5 | 8/6 | M16x1,5 | 16.5 | 18.5 | 8.5 | 27 | 17 | 29 | 10 |
| 9512 8-M22x1,5 | 8/6 | M22x1,5 | 16.5 | 23.5 | 8.5 | 21 | 19 | 39 | 10 |
| 9512 10/7-M12x1,5 | 10/7 | M12x1,5 | 17.8 | 19.5 | 8.5 | 33.5 | 18 | 29 | 10 |
| 9512 10/7-M16x1,5 | 10/7 | M16x1,5 | 17.8 | 19.5 | 8.5 | 28 | 18 | 27 | 10 |
| 9512 10/7-M22x1,5 | 10/7 | M22x1,5 | 18.5 | 23.5 | 8.5 | 22.5 | 19 | 36 | 10 |
| 9512 10-M12x1,5 | 10/8 | M12x1,5 | 17.8 | 19.5 | 8.5 | 33.5 | 18 | 29 | 10 |
| 9512 10-M16x1,5 | 10/8 | M16x1,5 | 17.8 | 19.5 | 8.5 | 28 | 18 | 27 | 10 |
| 9512 10-M18x1,5 | 10/8 | M18x1,5 | 17.8 | 19.5 | 8.5 | 28 | 18 | 31 | 10 |
| 9512 10-M22x1,5 | 10/8 | M22x1,5 | 18.5 | 23.5 | 8.5 | 22.5 | 19 | 36 | 10 |
| 9512 12-M12x1,5 | 12/9 | M12x1,5 | 19.8 | 21.5 | 8.5 | 34 | 20 | 32 | 10 |
| 9512 12-M14x1,5 | 12/9 | M14x1,5 | 19.8 | 21.5 | 8.5 | 33.5 | 20 | 35 | 10 |
| 9512 12-M16x1,5 | 12/9 | M16x1,5 | 19.8 | 21.5 | 8.5 | 32.5 | 20 | 36 | 10 |
| 9512 12-M22x1,5 | 12/9 | M22x1,5 | 20.5 | 24 | 8.5 | 23 | 22 | 37 | 10 |
| 9512 15/11-M16x1,5 | 15/11 | M16x1,5 | 23.8 | 26.5 | 8.5 | 37.5 | 24 | 52 | 10 |
| 9512 15/11-M22x1,5 | 15/11 | M22x1,5 | 23.8 | 26.5 | 8.5 | 30.5 | 24 | 49 | 10 |
| 9512 15-M16x1,5 | 15/12 | M16x1,5 | 23.8 | 26.5 | 8.5 | 37.5 | 24 | 52 | 10 |
| 9512 15-M22x1,5 | 15/12 | M22x1,5 | 23.8 | 26.5 | 8.5 | 30.5 | 24 | 49 | 10 |
| 9512 16/12-M16x1,5 | 16/12 | M16x1,5 | 25 | 30 | 8.5 | 41 | 27 | 71 | 10 |
| 9512 16/12-M22x1,5 | 16/12 | M22x1,5 | 25 | 30 | 8.5 | 33.5 | 27 | 67 | 10 |
| 9512 16-M22x1,5 | 16/13 | M22x1,5 | 25 | 30 | 8.5 | 33.5 | 27 | 67 | 10 |
| 9512 18-M22x1,5 | 18/14 | M22x1,5 | 26.8 | 30 | 8.5 | 38.5 | 27 | 71 | 10 |

Straight fittings Mod. D6512

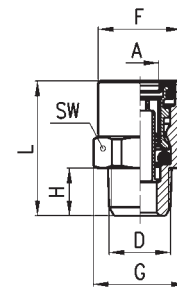
Supplied without any insert



DIMENSIONS

| Mod. | A | D | F | G | H | L | SW | Weight (g) | Package (pcs) |
|----------------------|---|-------|------|------|---|------|----|------------|---------------|
| D6512 4-M10x1 | 4 | M10x1 | 11.7 | 13.2 | 7 | 24.5 | 12 | 10 | 10 |

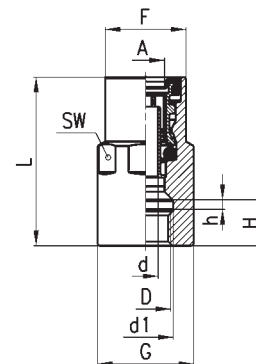
Straight fittings Mod. 9510



DIMENSIONS

| Mod. | A | D | F | G | H | L | SW | Weight (g) | Package (pcs) |
|-------------------|-----|----------|------|------|---|------|----|------------|---------------|
| 9510 6-02 | 6/4 | 1/8 NPTF | 13.8 | 15 | 8 | 24.5 | 14 | 15 | 10 |
| 9510 05-02 | 8/6 | 1/8 NPTF | 16.5 | 18.5 | 8 | 30 | 17 | 25 | 10 |

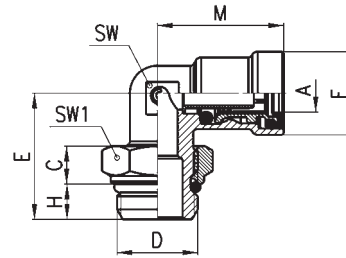
Fittings with female thread Mod. 9463



DIMENSIONS

| Mod. | A | D | d | d1 | H | h | L | F | G | SW | Weight (g) | Pack. (pcs) |
|-----------------------|-----|---------|---|----|------|---|------|------|------|----|------------|-------------|
| 9463 6-M10x1 | 6/4 | M10x1 | 3 | 11 | 9 | 2 | 31.5 | 13.8 | 15 | 14 | 26 | 10 |
| 9463 6-M16x1,5 | 6/4 | M16x1,5 | 3 | - | 10.5 | - | 34 | 15.3 | 21 | 19 | 49 | 10 |
| 9463 8-M10x1 | 8/6 | M10x1 | 5 | 11 | 9 | 2 | 33 | 16.5 | 18.5 | 17 | 45 | 10 |

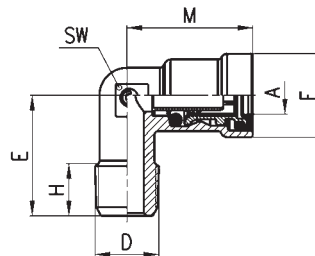
Elbow fittings Mod. 9502



DIMENSIONS

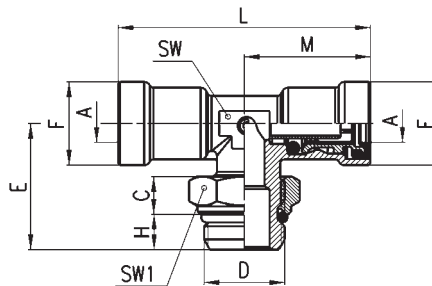
| Mod. | A | C | D | E | F | H | M | SW | SW1 | Weight (g) | Package (pcs) |
|--------------------|-------|-----|---------|------|------|-----|------|----|-----|------------|---------------|
| 9502 6-M10x1 | 6/4 | 5 | M10x1 | 21 | 14.5 | 5 | 22.5 | 9 | 14 | 24 | 10 |
| 9502 6-M12x1,5 | 6/4 | 7 | M12x1,5 | 23.5 | 14.5 | 7.5 | 22.5 | 9 | 17 | 28 | 10 |
| 9502 6-M16x1,5 | 6/4 | 7.5 | M16x1,5 | 25 | 14.5 | 7 | 23 | 11 | 19 | 37 | 10 |
| 9502 8-M10x1 | 8/6 | 5 | M10x1 | 22 | 16.5 | 5 | 25 | 11 | 14 | 29 | 10 |
| 9502 8-M12x1,5 | 8/6 | 7 | M12x1,5 | 25 | 16.5 | 7.5 | 25 | 11 | 17 | 35 | 10 |
| 9502 8-M14x1,5 | 8/6 | 7 | M14x1,5 | 25 | 16.5 | 7.5 | 25 | 11 | 19 | 37 | 10 |
| 9502 8-M16x1,5 | 8/6 | 7.5 | M16x1,5 | 25 | 16.5 | 7 | 25 | 11 | 19 | 36 | 10 |
| 9502 8-M22x1,5 | 8/6 | 8.5 | M22x1,5 | 29 | 16.5 | 8 | 25 | 11 | 27 | 58 | 10 |
| 9502 10/7-M12x1,5 | 10/7 | 7 | M12x1,5 | 26 | 18.5 | 7.5 | 27 | 13 | 17 | 43 | 10 |
| 9502 10/7-M16x1,5 | 10/7 | 7.5 | M16x1,5 | 26 | 18.5 | 7 | 27 | 13 | 19 | 45 | 10 |
| 9502 10/7-M22x1,5 | 10/7 | 8.5 | M22x1,5 | 29 | 18.5 | 8 | 27 | 13 | 27 | 66 | 10 |
| 9502 10-M12x1,5 | 10/8 | 7 | M12x1,5 | 26 | 18.5 | 7.5 | 27 | 13 | 17 | 43 | 10 |
| 9502 10-M16x1,5 | 10/8 | 7.5 | M16x1,5 | 26 | 18.5 | 7 | 27 | 13 | 19 | 45 | 10 |
| 9502 10-M22x1,5 | 10/8 | 8.5 | M22x1,5 | 29 | 18.5 | 8 | 27 | 13 | 27 | 66 | 10 |
| 9502 12-M12x1,5 | 12/9 | 7 | M12x1,5 | 27 | 20.5 | 7.5 | 28.5 | 15 | 17 | 51 | 10 |
| 9502 12-M16x1,5 | 12/9 | 7.5 | M16x1,5 | 27 | 20.5 | 7 | 28.5 | 15 | 19 | 50 | 10 |
| 9502 12-M22x1,5 | 12/9 | 8.5 | M22x1,5 | 30 | 20.5 | 8 | 28.5 | 15 | 27 | 71 | 10 |
| 9502 15/11-M16x1,5 | 15/11 | 7.5 | M16x1,5 | 30.5 | 24.5 | 7 | 34 | 18 | 19 | 81 | 10 |
| 9502 15/11-M22x1,5 | 15/11 | 8.5 | M22x1,5 | 34 | 24.5 | 8 | 34 | 18 | 27 | 99 | 10 |
| 9502 15-M16x1,5 | 15/12 | 7.5 | M16x1,5 | 30.5 | 24.5 | 7 | 34 | 18 | 19 | 81 | 10 |
| 9502 15-M22x1,5 | 15/12 | 8.5 | M22x1,5 | 34 | 24.5 | 8 | 34 | 18 | 27 | 99 | 10 |
| 9502 16/12-M16x1,5 | 16/12 | 7.5 | M16x1,5 | 32 | 25 | 7 | 35.5 | 21 | 19 | 108 | 10 |
| 9502 16/12-M22x1,5 | 16/12 | 8.5 | M22x1,5 | 33 | 25 | 8 | 35.5 | 21 | 27 | 119 | 10 |
| 9502 16-M22x1,5 | 16/13 | 8.5 | M22x1,5 | 33 | 25 | 8 | 35.5 | 21 | 27 | 119 | 10 |
| 9502 18-M22x1,5 | 18/14 | 8.5 | M22x1,5 | 33 | 27.5 | 8 | 35.5 | 21 | 27 | 123 | 10 |

Elbow fittings Mod. 9500



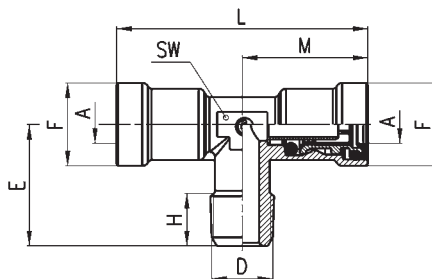
| DIMENSIONS | | | | | | | | | | |
|------------|------|----------|------|------|---------|------|----|------------|---------------|--|
| Mod. | A | D | E | F | H (min) | M | SW | Weight (g) | Package (pcs) | |
| 9500 6-02 | 6/4 | 1/8 NPTF | 17.5 | 14.5 | 7 | 21.5 | 9 | 17 | 10 | |
| 9500 05-02 | 8/6 | 1/8 NPTF | 17 | 16.5 | 7 | 25 | 11 | 23 | 10 | |
| 9500 12-06 | 12/9 | 3/8 NPTF | 24.5 | 20.5 | 11 | 28.5 | 15 | 43 | 10 | |

Tee fittings Mod. 9412



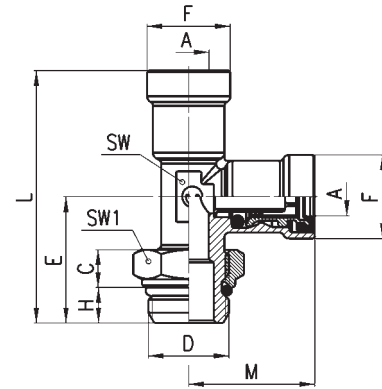
| DIMENSIONS | | | | | | | | | | | | |
|--------------------|-------|-----|---------|------|------|-----|----|------|----|-----|------------|-------------|
| Mod. | A | C | D | E | F | H | L | M | SW | SW1 | Weight (g) | Pack. (pcs) |
| 9412 6-M10x1 | 6/4 | 5 | M10x1 | 22 | 14.5 | 5 | 45 | 22.5 | 9 | 14 | 35 | 10 |
| 9412 6-M12x1,5 | 6/4 | 7 | M12x1.5 | 27 | 14.5 | 7.5 | 46 | 23 | 11 | 17 | 52 | 10 |
| 9412 6-M16x1,5 | 6/4 | 7.5 | M16x1.5 | 27 | 14.5 | 7 | 46 | 23 | 11 | 19 | 55 | 10 |
| 9412 8-M12x1,5 | 8/6 | 7 | M12x1.5 | 27 | 16.5 | 7.5 | 50 | 25 | 11 | 17 | 53 | 10 |
| 9412 8-M16x1,5 | 8/6 | 7.5 | M16x1.5 | 27 | 16.5 | 7 | 50 | 25 | 11 | 19 | 57 | 10 |
| 9412 8-M22x1,5 | 8/6 | 8.5 | M22x1.5 | 32 | 16.5 | 8 | 53 | 26.5 | 15 | 27 | 94 | 10 |
| 9412 10/7-M12x1,5 | 10/7 | 7 | M12x1.5 | 29 | 18.5 | 7.5 | 55 | 27.5 | 15 | 17 | 79 | 10 |
| 9412 10/7-M16x1,5 | 10/7 | 7.5 | M16x1.5 | 29 | 18.5 | 7 | 55 | 27.5 | 15 | 19 | 81 | 10 |
| 9412 10/7-M22x1,5 | 10/7 | 8.5 | M22x1.5 | 32 | 18.5 | 8 | 55 | 27.5 | 15 | 27 | 101 | 10 |
| 9412 10-M12x1,5 | 10/8 | 7 | M12x1.5 | 29 | 18.5 | 7.5 | 55 | 27.5 | 15 | 17 | 79 | 10 |
| 9412 10-M16x1,5 | 10/8 | 7.5 | M16x1.5 | 29 | 18.5 | 7 | 55 | 27.5 | 15 | 19 | 81 | 10 |
| 9412 10-M22x1,5 | 10/8 | 8.5 | M22x1.5 | 32 | 18.5 | 8 | 55 | 27.5 | 15 | 27 | 101 | 10 |
| 9412 12-M12x1,5 | 12/9 | 7 | M12x1.5 | 29 | 20.5 | 7.5 | 57 | 28.5 | 15 | 17 | 72 | 10 |
| 9412 12-M16x1,5 | 12/9 | 7.5 | M16x1.5 | 29 | 20.5 | 7 | 57 | 28.5 | 15 | 19 | 74 | 10 |
| 9412 12-M22x1,5 | 12/9 | 8.5 | M22x1.5 | 32 | 20.5 | 8 | 57 | 28.5 | 15 | 27 | 93 | 10 |
| 9412 15/11-M16x1,5 | 15/11 | 7.5 | M16x1.5 | 32.5 | 24.5 | 7 | 68 | 34 | 18 | 19 | 115 | 10 |
| 9412 15/11-M22x1,5 | 15/11 | 8.5 | M22x1.5 | 34 | 24.5 | 8 | 68 | 34 | 18 | 27 | 134 | 10 |
| 9412 15-M16x1,5 | 15/12 | 7.5 | M16x1.5 | 32.5 | 24.5 | 7 | 68 | 34 | 18 | 19 | 115 | 10 |
| 9412 15-M22x1,5 | 15/12 | 8.5 | M22x1.5 | 34 | 24.5 | 8 | 68 | 34 | 18 | 27 | 134 | 10 |

Tee fittings Mod. 9410



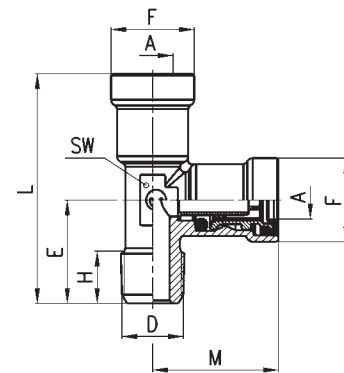
| DIMENSIONS | | | | | | | | | | |
|------------|-----|----------|------|------|---------|----|------|----|------------|---------------|
| Mod. | A | D | E | F | H (min) | L | M | SW | Weight (g) | Package (pcs) |
| 9410 6-02 | 6/4 | 1/8 NPTF | 17.5 | 14.5 | 7 | 45 | 22.5 | 9 | 29 | 10 |
| 9410 05-02 | 8/6 | 1/8 NPTF | 18 | 16.5 | 7 | 50 | 25 | 11 | 39 | 10 |

Tee fittings Mod. 9422



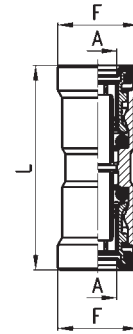
| DIMENSIONS | | | | | | | | | | | | |
|-----------------|-------|-----|---------|------|------|-----|------|------|----|-----|------------|-------------|
| Mod. | A | C | D | E | F | H | L | M | SW | SW1 | Weight (g) | Pack. (pcs) |
| 9422 6-M10x1 | 6/4 | 5 | M10x1 | 22 | 14.5 | 5 | 44.5 | 22.5 | 9 | 14 | 35 | 10 |
| 9422 6-M12x1,5 | 6/4 | 7 | M12x1,5 | 27 | 14.5 | 7.5 | 50 | 23 | 11 | 17 | 52 | 10 |
| 9422 6-M16x1,5 | 6/4 | 7.5 | M16x1,5 | 27 | 14.5 | 7 | 50 | 23 | 11 | 19 | 54 | 10 |
| 9422 8-M12x1,5 | 8/6 | 7 | M12x1,5 | 27 | 16.5 | 7.5 | 52 | 25 | 11 | 17 | 54 | 10 |
| 9422 8-M16x1,5 | 8/6 | 7.5 | M16x1,5 | 27 | 16.5 | 7 | 52 | 25 | 11 | 19 | 57 | 10 |
| 9422 8-M22x1,5 | 8/6 | 8.5 | M22x1,5 | 32 | 16.5 | 8 | 58.5 | 26.5 | 15 | 27 | 95 | 10 |
| 9422 10-M16x1,5 | 10/8 | 7.5 | M16x1,5 | 29 | 18.5 | 7 | 56.5 | 27.5 | 15 | 19 | 81 | 10 |
| 9422 10-M22x1,5 | 10/8 | 8.5 | M22x1,5 | 32 | 18.5 | 8 | 59.5 | 27.5 | 15 | 27 | 102 | 10 |
| 9422 12-M12x1,5 | 12/9 | 7 | M12x1,5 | 29 | 20.5 | 7.5 | 57.5 | 28.5 | 15 | 17 | 73 | 10 |
| 9422 12-M16x1,5 | 12/9 | 7.5 | M16x1,5 | 29 | 20.5 | 7 | 57.5 | 28.5 | 15 | 19 | 72 | 10 |
| 9422 12-M22x1,5 | 12/9 | 8.5 | M22x1,5 | 32 | 20.5 | 8 | 60.5 | 28.5 | 15 | 27 | 95 | 10 |
| 9422 15-M16x1,5 | 15/12 | 7.5 | M16x1,5 | 32.5 | 24.5 | 7 | 66.5 | 34 | 18 | 19 | 117 | 10 |
| 9422 15-M22x1,5 | 15/12 | 8.5 | M22x1,5 | 34 | 24.5 | 8 | 68 | 34 | 18 | 27 | 134 | 10 |

Tee fittings Mod. 9420



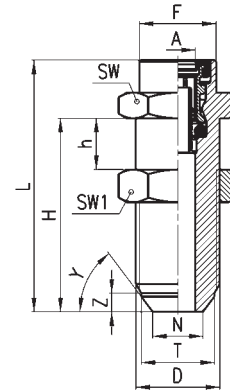
| DIMENSIONS | | | | | | | | | | | |
|------------|-----|----------|------|------|---------|----|------|----|------------|---------------|--|
| Mod. | A | D | E | F | H (min) | L | M | SW | Weight (g) | Package (pcs) | |
| 9420 6-02 | 6/4 | 1/8 NPTF | 17.5 | 14.5 | 7 | 40 | 22.5 | 9 | 29 | 10 | |
| 9420 05-02 | 8/6 | 1/8 NPTF | 18 | 16.5 | 7 | 43 | 25 | 11 | 40 | 10 | |

Connectors Mod. 9580



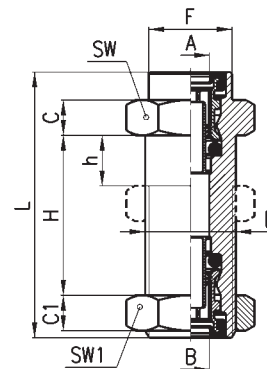
| DIMENSIONS | | | | | |
|------------|-------|----|------|------------|---------------|
| Mod. | A | F | L | Weight (g) | Package (pcs) |
| 9580 6 | 6/4 | 14 | 37.5 | 20 | 10 |
| 9580 8 | 8/6 | 16 | 41 | 27 | 10 |
| 9580 10 | 10/8 | 18 | 44 | 32 | 10 |
| 9580 10/7 | 10/7 | 18 | 44 | 32 | 10 |
| 9580 12 | 12/9 | 20 | 45.5 | 43 | 10 |
| 9580 15/11 | 15/11 | 24 | 52 | 87 | 10 |
| 9580 16/12 | 16/12 | 25 | 58 | 100 | 10 |
| 9580 18 | 18/14 | 27 | 57 | 109 | 10 |

Bulkhead connectors Mod. 9590



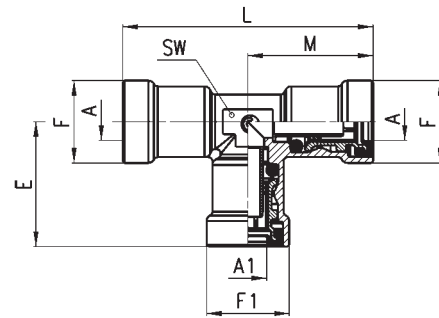
| DIMENSIONS | | | | | | | | | | | | | | |
|---------------------|------|---------|------|----|----|------|------|------|----|---|----|-----|------------|---------------|
| Mod. | A | D | F | H | h | L | N | T | Y | Z | SW | SW1 | Weight (g) | Package (pcs) |
| 9590 8-M18x1,5 | 8/6 | M18x1.5 | - | 50 | 10 | 55.5 | 10.8 | 15.7 | 53 | 4 | 22 | 22 | 88 | 10 |
| 9590 12-M18x1,5 | 12/9 | M18x1.5 | 20.5 | 34 | 4 | 53 | 11 | 16 | 60 | 5 | 22 | 22 | 83 | 10 |
| 9590 12-M18x1,5-S04 | 12/9 | M18x1.5 | 20.5 | 33 | 4 | 52 | 10.8 | 15.7 | 53 | 4 | 22 | - | 71 | 10 |

Bulkhead connectors Mod. 9592



| DIMENSIONS | | | | | | | | | | | | | |
|-----------------|------|-----|-----|----|-------|------|----|---------|------|----|-----|------------|---------------|
| Mod. | A | B | C | C1 | D | F | H | h (min) | L | SW | SW1 | Weight (g) | Package (pcs) |
| 9592 8-8-M18X1 | 8/6 | 8/6 | 5.5 | 7 | M18x1 | - | 30 | 18 | 43.5 | 22 | 22 | 75 | 10 |
| 9592 12-8-M18X1 | 12/9 | 8/6 | 7.5 | 7 | M18x1 | 20.5 | 30 | 18 | 57 | 22 | 22 | 87 | 10 |

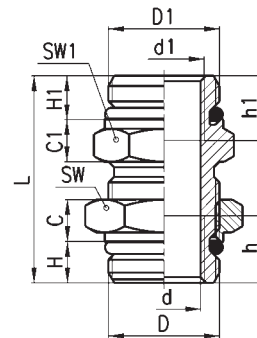
Tee fittings Mod. 9540



DIMENSIONS

| Mod. | A | A1 | E | F | F1 | L | M | SW | Weight (g) | Pack. (pcs) |
|---------------------|-------|-------|------|------|------|----|------|----|------------|-------------|
| 9540 6 | 6/4 | 6/4 | 22.5 | 14.5 | 14.5 | 45 | 22.5 | 9 | 35 | 10 |
| 9540 8 | 8/6 | 8/6 | 25 | 16.5 | 16.5 | 50 | 25 | 11 | 52 | 10 |
| 9540 10 | 10/8 | 10/8 | 27.5 | 18.5 | 18.5 | 55 | 27.5 | 15 | 80 | 10 |
| 9540 10/7 | 10/7 | 10/7 | 27.5 | 18.5 | 18.5 | 55 | 27.5 | 15 | 80 | 10 |
| 9540 12 | 12/9 | 12/9 | 28.5 | 20.5 | 20.5 | 57 | 28.5 | 15 | 73 | 10 |
| 9540 15/11 | 15/11 | 15/11 | 34 | 24.5 | 24.5 | 68 | 34 | 18 | 134 | 10 |
| 9540 8-8-6 | 8/6 | 6/4 | 23 | 16.5 | 14.5 | 50 | 25 | 11 | 49 | 10 |
| 9540 12-12-8 | 12/9 | 8/6 | 26.5 | 20.5 | 16.5 | 57 | 28.5 | 15 | 72 | 10 |

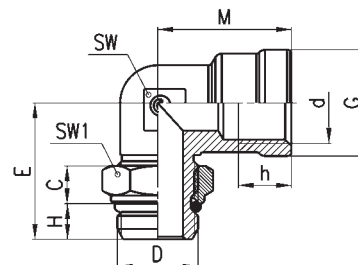
Bulkhead connectors Mod. D2512 and D2502



DIMENSIONS

| Mod. | D | D1 | d | d1 | H | H1 | h (min) | h1 (min) | C | C1 | L | SW | SW1 | Weight (g) | Package (pcs) |
|------------------------------|---------|---------|---------|-------|---|-----|---------|----------|-----|-----|----|----|-----|------------|---------------|
| D2512 M22x1,5-M16x1,5 | M22x1.5 | M16x1.5 | M16x1.5 | M10x1 | 8 | 8.5 | 10.5 | 10.5 | 8.5 | 8.5 | 48 | 27 | 22 | 78 | 10 |
| D2502 M22x1,5-M22x1,5 | M22x1.5 | M22x1.5 | - | - | 8 | 8.5 | - | - | 8.5 | 8.5 | 39 | 27 | 24 | 77 | 10 |

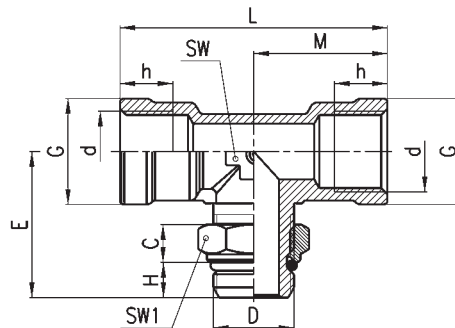
Elbow fittings Mod. D2022



DIMENSIONS

| Mod. | D | d | C | E | G | H | h (min) | M | SW | SW1 | Weight (g) | Package (pcs) |
|------------------------------|---------|---------|-----|----|----|---|---------|------|----|-----|------------|---------------|
| D2022 M16x1,5-M16x1,5 | M16x1.5 | M16x1.5 | 7.5 | 27 | 21 | 7 | 10.5 | 26.5 | 15 | 19 | 51 | 10 |
| D2022 M16x1,5-M22x1,5 | M22x1.5 | M16x1.5 | 8.5 | 30 | 21 | 8 | 10.5 | 26.5 | 15 | 27 | 70 | 10 |
| D2022 M22x1,5-M22x1,5 | M22x1.5 | M22x1.5 | 8.5 | 33 | 27 | 8 | 11 | 22 | 24 | 27 | 91 | 10 |

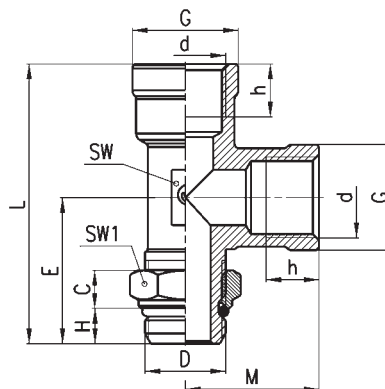
Tee fittings Mod. D2062



DIMENSIONS

| Mod. | d | D | C | E | G | H | h (min) | L | M | SW | SW1 | Weight (g) | Package (pcs) |
|-----------------------|---------|---------|-----|----|----|-----|---------|----|------|----|-----|------------|---------------|
| D2062 M16x1,5-M12x1,5 | M16x1.5 | M22x1.5 | 7 | 29 | 21 | 7.5 | 10.5 | 53 | 26.5 | 15 | 17 | 76 | 10 |
| D2062 M16x1,5-M16x1,5 | M16x1.5 | M16x1.5 | 7.5 | 29 | 21 | 7 | 10.5 | 37 | 18.5 | 20 | 19 | 64 | 10 |
| D2062 M16x1,5-M22x1,5 | M16x1.5 | M22x1.5 | 8.5 | 32 | 21 | 8 | 10.5 | 37 | 18.5 | 20 | 27 | 86 | 10 |
| D2062 M22x1,5-M22x1,5 | M22x1.5 | M22x1.5 | 8.5 | 33 | 27 | 8 | 11 | 64 | 32 | 20 | 27 | 127 | 10 |

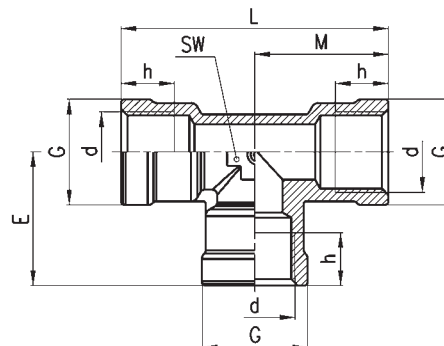
Tee fittings Mod. D2072



DIMENSIONS

| Mod. | d | D | C | E | G | H | h (min) | L | M | SW | SW1 | Weight (g) | Package (pcs) |
|-----------------------|---------|---------|-----|----|----|-----|---------|------|------|----|-----|------------|---------------|
| D2072 M16x1,5-M12x1,5 | M16x1.5 | M22x1.5 | 7 | 29 | 21 | 7.5 | 10.5 | 55.5 | 26.5 | 15 | 17 | 67 | 10 |
| D2072 M16x1,5-M16x1,5 | M16x1.5 | M16x1.5 | 7.5 | 29 | 21 | 7 | 10.5 | 47.5 | 18.5 | 20 | 19 | 64 | 10 |
| D2072 M16x1,5-M22x1,5 | M16x1.5 | M22x1.5 | 8.5 | 32 | 21 | 8 | 10.5 | 50.5 | 18.5 | 20 | 27 | 86 | 10 |
| D2072 M22x1,5-M22x1,5 | M22x1.5 | M22x1.5 | 8.5 | 33 | 27 | 8 | 11 | 65 | 32 | 20 | 27 | 127 | 10 |

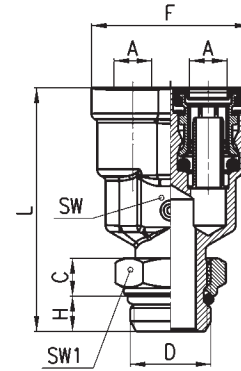
Tee fittings Mod. D2003



DIMENSIONS

| Mod. | d | E | G | h (min) | M | L | SW | Weight (g) | Package (pcs) |
|---------------|---------|------|----|---------|------|----|----|------------|---------------|
| D2003 M16x1,5 | M16x1.5 | 18.5 | 21 | 10.5 | 18.5 | 37 | 20 | 49 | 10 |
| D2003 M22x1,5 | M22x1.5 | 32 | 27 | 11 | 32 | 64 | 20 | 117 | 10 |

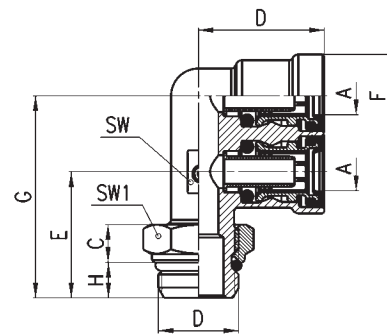
Y fittings Mod. 9450



DIMENSIONS

| Mod. | A | C | D | F | H | L | SW | SW1 | Weight (g) | Package (pcs) |
|------------------------|------|-----|---------|------|---|------|----|-----|------------|---------------|
| 9450 8-M16x1,5 | 8/6 | 7.5 | M16x1.5 | 31.5 | 7 | 48.3 | 14 | 19 | 62 | 10 |
| 9450 12-M16x1,5 | 12/9 | 7.5 | M16x1.5 | 40 | 7 | 58.7 | 20 | 19 | 120 | 10 |
| 9450 12-M22x1,5 | 12/9 | 8.5 | M22x1.5 | 40 | 8 | 59.2 | 20 | 27 | 131 | 10 |

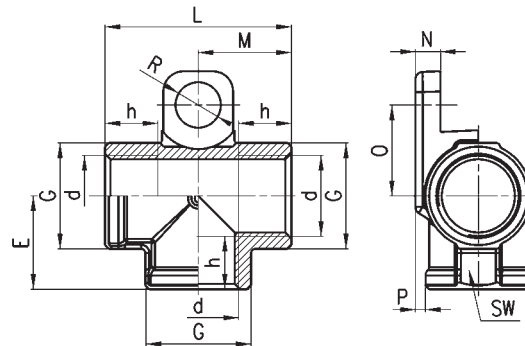
Elbow fittings Mod. 9402



DIMENSIONS

| Mod. | A | C | D | E | F | G | H | SW | Weight (g) | Pack. (pcs) |
|------------------------|------|-----|---------|----|-----|----|---|----|------------|-------------|
| 9402 12-M16x1,5 | 12/9 | 7.5 | M16x1.5 | 31 | Ø21 | 50 | 7 | 15 | 98 | 10 |
| 9402 12-M22x1,5 | 12/9 | 8.5 | M22x1.5 | 30 | Ø21 | 49 | 8 | 15 | 111 | 10 |

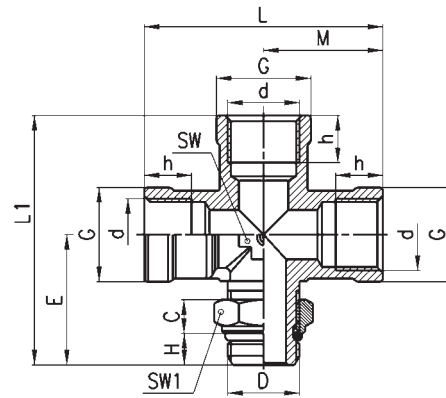
Tee fittings Mod. D2003...S01



DIMENSIONS

| Mod. | d | E | G | h (min) | L | M | N | O | P | R | SW | Weight (g) | Package (pcs) |
|--------------------------|---------|------|----|---------|----|------|---|----|---|---|----|------------|---------------|
| D2003 M16x1,5-S01 | M16x1.5 | 18.5 | 21 | 10.5 | 37 | 18.5 | 5 | 18 | 2 | 9 | 21 | 49 | 10 |

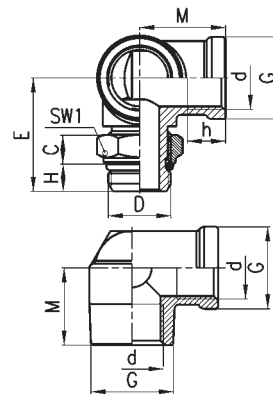
Cross fittings Mod. D2032



DIMENSIONS

| Mod. | d | D | C | E | G | H | h | L | L1 | M | SW | SW1 | Weight (g) | Package (pcs) |
|------------------------------|---------|---------|---|----|----|-----|------|----|----|----|----|-----|------------|---------------|
| D2032 M16x1,5-M16x1,5 | M16x1.5 | M16x1.5 | 7 | 29 | 21 | 7.5 | 10.5 | 56 | 57 | 28 | 15 | 17 | 110 | 10 |

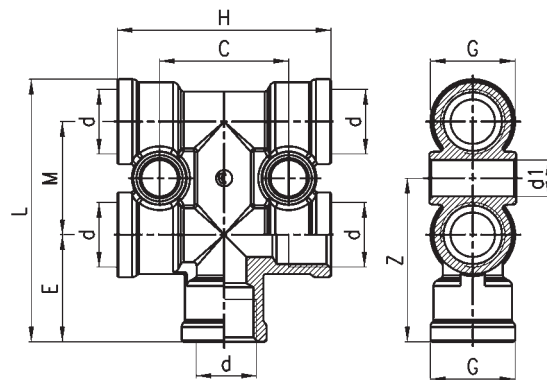
Elbow fittings Mod. D2077



DIMENSIONS

| Mod. | D | d | C | E | G | H | h | M | SW | Weight (g) | Package (pcs) |
|----------------------------------|---------|---------|-----|------|----|---|------|----|----|------------|---------------|
| D2077 M16x1,5-M16x1,5-S01 | M16x1.5 | M16x1.5 | 7.5 | 34 | 21 | 7 | 10.5 | 22 | 19 | 85 | 10 |
| D2077 M16x1,5-M22x1,5-S01 | M16x1.5 | M22x1.5 | 8.5 | 35.5 | 21 | 8 | 10.5 | 22 | 27 | 95 | 10 |

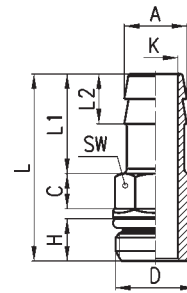
Fittings Mod. D3043



DIMENSIONS

| Mod. | d | d1 | C | E | M | L | H | G | Z | Weight (g) | Package (pcs) |
|-------------------------------------|---------|----|----|------|----|----|----|----|------|------------|---------------|
| D3043 M16X1,5-2D-M16X1,5-S01 | M16X1.5 | 9 | 32 | 26.5 | 28 | 65 | 53 | 21 | 40.5 | 135 | 10 |

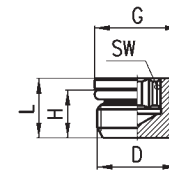
Hose adapters Mod. D2602



DIMENSIONS

| Mod. | A | D | H | C | L | L1 | L2 | K | SW | Weight (g) | Pack. (pcs) |
|--------------------------------|------|---------|-----|---|------|----|----|-----|----|------------|-------------|
| D2602 10-M16X1,5-L=30 | 11 | M16x1.5 | 8.5 | 5 | 46 | 30 | 10 | 7.5 | 14 | 26 | 10 |
| D2602 11,5-M16X1,5-L=35 | 12.5 | M16x1.5 | 8.5 | 5 | 51 | 35 | 10 | 9 | 14 | 26 | 10 |
| D2602 12-M16x1,5 | 12.5 | M16x1.5 | 8.5 | 5 | 36 | 20 | 10 | 9 | 14 | 22 | 10 |
| D2602 12-M22x1,5 | 12.5 | M22x1.5 | 8.5 | 5 | 36.5 | 20 | 10 | 9 | 19 | 34 | 10 |
| D2602 13-M16x1,5-S01 | 15 | M16x1.5 | 9 | 7 | 56 | 40 | 10 | 10 | 22 | 48 | 10 |

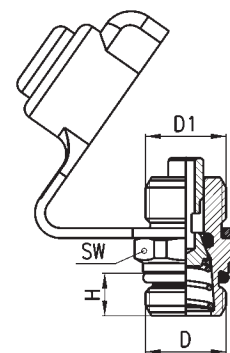
Taps Mod. D2612



DIMENSIONS

| Mod. | D | H | L | G | SW | Weight (g) | Package (pcs) |
|----------------------|---------|-----|------|------|----|------------|---------------|
| D2612 M12x1,5 | M12x1.5 | 8.5 | 10.5 | 12.9 | 6 | 6 | 10 |
| D2612 M16x1,5 | M16x1.5 | 8.5 | 11 | 17 | 8 | 12 | 10 |
| D2612 M22x1,5 | M22x1.5 | 8.5 | 11.5 | 23.5 | 12 | 24 | 10 |

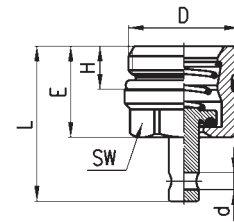
Test point valve Mod. VPC



DIMENSIONS

| Mod. | D | D1 | H | L | SW | Weight (g) | Package (pcs) |
|----------------------------|---------|---------|-----|------|----|------------|---------------|
| VPC M16x1,5-M16x1,5 | M16x1.5 | M16x1.5 | 8.5 | 27.5 | 19 | 40 | 10 |
| VPC M22x1,5-M16x1,5 | M22x1.5 | M16x1.5 | 8.5 | 27 | 24 | 51 | 10 |

Drain valve Mod. VDC



DIMENSIONS

| Mod. | D | d | H | E | L | SW | Weight (g) | Package (pcs) |
|--------------------|---------|-----|-----|----|------|----|------------|---------------|
| VDC M22X1,5 | M22x1.5 | 3.4 | 8.5 | 18 | 30.7 | 19 | 32 | 10 |

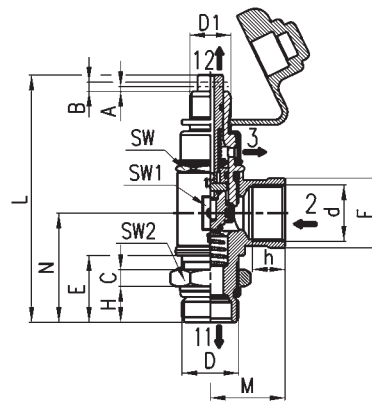
Fittings Mod. V604



A = rod position for tire inflation
 B = rod position for tank filling through air intake for tire inflation

2 = energy supply
 3 = drain
 11, 12 = energy flow

Flow 2 + 11 bar at 6 bar ΔP 1: 1620 l/min
 Flow 2 + 12 bar at 6 bar with no interruption: 400 l/min
 Safety pressure: 10 bar Q = 100 l/min;
 8 bar Q = 0 l/min



DIMENSIONS

| Mod. | C | D | D1 | d | E | F | H | h (min) | L | M | N | SW | SW1 | SW2 | Weight (g) | Package (pcs) |
|-------------------------|-----|---------|---------|---------|----|----|----|---------|----|----|------|----|-----|-----|------------|---------------|
| V604 M22X1,5-S01 | 8.5 | M22X1.5 | M16X1.5 | M22X1.5 | 26 | 27 | 12 | 11 | 95 | 29 | 42.5 | 24 | 27 | 27 | 250 | 2 |

Tubes Mod. TRN

Black tubes in polyamide (PA12)

According to standards:

- DIN 74324
- REACH REGULATION (EC N°1907/2006)
- EUROPEAN DIRECTIVE RoHS n° 2002/95/EC


CHARACTERISTICS

| Mod. | D/d | MAX pressure at 23°C (bar) | Weight (g/m) | Min. curve radius (mm) | Operating temperature (°C) | Size (m) |
|--------------|-------|----------------------------|--------------|------------------------|----------------------------|----------|
| TRN 4/2 NX | 4/2 | 49 | 9.6 | 16 | -55°C + +100°C | 50 |
| TRN 6/4 NX | 6/4 | 29 | 16 | 30 | -55°C + +100°C | 50 |
| TRN 8/6 NX | 8/6 | 21 | 22.4 | 40 | -55°C + +100°C | 50 |
| TRN 10/8 NX | 10/8 | 16 | 28.8 | 60 | -55°C + +100°C | 50 |
| TRN 12/9 NX | 12/9 | 21 | 50.4 | 60 | -55°C + +100°C | 50 |
| TRN 15/12 NX | 15/12 | 16 | 64.9 | 90 | -55°C + +100°C | 50 |
| TRN 16/13 NX | 16/13 | 13 | 71 | 120 | -55°C + +100°C | 50 |
| TRN 18/14 NX | 18/14 | 18 | 102.5 | 100 | -55°C + +100°C | 50 |

* TRN 16/13 NX not foreseen by DIN 74324 standard

Tube cutter tool Mod. PNZ and PNZP


PNZ-25

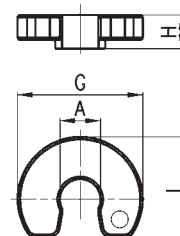
PNZP-12

Mod.

| | |
|---------|--------------------------------------|
| PNZ-12 | able to cut tubes with Ø up to 12 mm |
| PNZ-25 | able to cut tubes with Ø up to 25 mm |
| PNZP-12 | able to cut tubes with Ø up to 12 mm |

Tube disconnecting key Mod. DRK

Material: technopolymer


DIMENSIONS

| Mod. | A | G | H | L | Weight (g) | Package (pcs) |
|--------|----|------|----|------|------------|---------------|
| DRK 6 | 6 | 25 | 6 | 19 | 1 | 10 |
| DRK 8 | 8 | 28.5 | 7 | 20 | 1 | 10 |
| DRK 10 | 10 | 30.5 | 9 | 22 | 2 | 10 |
| DRK 12 | 12 | 33 | 9 | 23 | 3 | 10 |
| DRK 15 | 15 | 36 | 10 | 27 | 3 | 10 |
| DRK 16 | 16 | 37 | 10 | 27.5 | 4 | 10 |
| DRK 18 | 18 | 40 | 12 | 31 | 5 | 10 |

Repair kit with Series 9000 C-Truck fittings

For braking systems of industrial vehicles

The kit is supplied with:

- | | | |
|------------|-----------|------------|
| 2x 9580 6 | 1x DRK 6 | 1x PNZP-12 |
| 2x 9580 8 | 1x DRK 8 | |
| 2x 9580 10 | 1x DRK 10 | |
| 2x 9580 12 | 1x DRK 12 | |



Mod.

TRUCK-DCASE/9000

Repair kit with Series 6000 fittings

For accessory equipment of industrial vehicles

The kit is supplied with:

- | | | |
|-----------|------------|------------|
| 2x 6580 4 | 2x 6580 10 | 1x PNZP-12 |
| 2x 6580 5 | 1x 6580 12 | |
| 2x 6580 6 | 1x 6580 14 | |
| 2x 6580 8 | | |



Mod.

TRUCK-DCASE/6000

Repair kit with Series 9000 C-Truck and Series 6000 fittings

For braking systems (Series 9000) and accessory equipment of industrial vehicles (Series 6000)

The kit is supplied with:

- | | | | |
|-----------|------------|------------|------------|
| 1x 6580 4 | 2x 6580 10 | 2x 9580 6 | 1x DRK 6 |
| 1x 6580 5 | 1x 6580 12 | 2x 9580 8 | 1x DRK 8 |
| 1x 6580 6 | 1x 6580 14 | 1x 9580 10 | 1x DRK 10 |
| 1x 6580 8 | | 1x 9580 12 | 1x DRK 12 |
| | | | 1x PNZP-12 |



Mod.

TRUCK-DCASE/9000+6000

Contacts

Camozzi spa
Società Unipersonale
 Via Eritrea, 20/I
 25126 Brescia - Italy
 Tel. +39 030 37921
 Fax +39 030 2400430
 info@camozzi.com
 www.camozzi.com

Camozzi Neumatica S.A.
 Prof. Dr. Pedro Chutro 3048
 1437 Buenos Aires
Argentina
 Tel. +54 11/49110816
 Fax +54 11/49124191
 info@camozzi.com.ar
 www.camozzi.com.ar

Camozzi GmbH Pneumatic
 Löfflerweg 18
 A-6060 Hall in Tirol
Austria
 Tel. +43 5223/52888-0
 Fax +43 5223/52888-500
 info@camozzi.at
 www.camozzi.at

Camozzi do Brasil Ltda.
 Rua Estácio de Sá, 1042
 13080-010 Campinas SP
Brazil
 Tel. +55 19/21374500
 Fax +55 19/21374530
 sac@camozzi.com.br
 www.camozzi.com.br

Camozzi Pneumatic
 64 Pererkhodnaya str., 1st floor
 Minsk - 220070
Byelorussia
 Tel. +375 17/3961170 (71)
 Fax +375 17/3961170 (71)
 info@camozzi.by
 www.camozzi.by

Shanghai Camozzi Pneumatic Control Components Co, Ltd.
 415, Ren De Road
 200434 Shanghai
China
 Tel. +86 21/65363650
 Fax +86 21/65360613
 info@camozzi.com.cn
 www.camozzi.com.cn

Shanghai Camozzi Automation Control Co, Ltd.
 717, Shuang Dan Road,
 Malu Town
 201801 Jiading Ind. District
 Shanghai
China
 Tel. +86 21/59100999
 Fax +86 21/59100333
 info@camozzi.com.cn
 www.camozzi.com.cn

Camozzi Aps
 Metalvej 7 F
 4000 Roskilde
Denmark
 Tel. +45 46/750202
 Fax +45 46/750203
 info@camozzi.dk
 www.camozzi.dk

Camozzi Automation OÜ
 Osmussaare 8-B204
 13811 Tallinn
Estonia
 Tel. +372 611/9055
 Fax +372 611/9055
 info@pneumaatika.eu
 www.pneumaatika.eu

Camozzi Pneumatic Sarl
 5, Rue Louis Gattefossé
 Parc de la Bandonnière
 69800 Saint Priest
France
 Tel. +33 478/213408
 Fax +33 472/280136
 info@camozzi.fr
 www.camozzi.fr

Camozzi GmbH Pneumatic
 Porschestraße 1
 D-73095 Albershausen
Germany
 Tel. +49 7161/91010-0
 Fax +49 7161/91010-99
 info@camozzi.de
 www.camozzi.de

Camozzi India Private Limited
 No D-44 Phase II Ext.,
 Hosiery Complex
 Noida - 201 305
 Uttar Pradesh
India
 Tel. +91 120/4055252
 Fax +91 120/4055200
 info@camozzi-india.com
 www.camozzi.in

Camozzi Pneumatic Kazakhstan LLP
 Shevchenko/Radostovec,
 165b/72g, off. 503
 050009 Almaty
Kazakhstan
 Tel. +7 727/3335334
 Fax +7 727/3335334
 info@camozzi.kz
 www.camozzi.kz

Camozzi Malaysia SDN. BHD.
 30 & 32, Jalan Industri USJ 1/3
 Taman Perindustrian USJ 1
 47600 Subang Jaya
 Selangor
Malaysia
 Tel. +60 3/80238400
 Fax +60 3/80235626
 cammal@camozzi.com.my
 www.camozzi.com.my

Camozzi Neumatica de Mexico S.A. de C.V.
 Lago Tanganica 707
 Col. Ocho Cedros 2^a sección
 50170 Toluca
México
 Tel. +52 722/2707880
 +52 722/2126283
 Fax +52 722/2707860
 camozzi@camozzi.com.mx
 www.camozzi.com.mx

Camozzi Pneumatic Ltd.
 Floor 14, Leningradskaya Street,
 1-A Himki, Moscow Region
 141400 Moscow
Russian Federation
 Tel. +7 495/7354961
 Fax +7 495/7354961
 info@camozzi.ru
 www.camozzi.ru

Camozzi Pneumatik AB
 Box 9214
 Bronsxyegatan 7
 20039 Malmö
Sweden
 Tel. +46 40/6005800
 Fax +46 40/6005899
 info@camozzi.se
 www.camozzi.se

Camozzi Benelux B.V.
 De Vijf Boeken 1 A
 2911 BL Nieuwerkerk
 a/d IJssel
The Netherlands
 Tel. +31 180/316677
 Fax +31 180/316616
 info@camozzi.nl
 www.camozzi.nl

Camozzi-Pneumatic Simferopol, LLC
 Frunze Str, 1-3, section "D"
 95018 - Kiev
Ukraine
 Tel. +38 044/5369520
 Fax +38 044/5369520
 info@camozzi.ua
 www.camozzi.ua

Camozzi Pneumatics Ltd.
 The Fluid Power Centre
 Watling Street
 Nuneaton, Warwickshire
 CV11 6BQ
United Kingdom
 Tel. +44 (0)24/76374114
 Fax +44 (0)24/76347520
 info@camozzi.co.uk
 www.camozzi.co.uk

Camozzi Pneumatics Inc.
 2160 Redbud Blvd., TX 75069
 P.O. Box 2386, TX 75070
 McKinney - Texas
USA
 Tel. +1 972/5488885
 Fax +1 972/5482110
 info@camozzi-usa.com
 www.camozzi-usa.com

Camozzi Venezuela S.A.
 Calle 146 con Av. 62
 N°146-180
 P.O. Box 529
 Zona Industrial Maracaibo
 Edo. Zulia
Venezuela
 Tel. +58 261/7360821
 Fax +58 261/7360401
 info@camozzi.com.ve
 www.camozzi.com.ve

Camozzi R.O. in Hochiminh City
 Unit 1.02, 1st floor,
 Vietnam Business Center
 57-59 Ho Tung Mau Street,
 Ben Nghe Ward, District 3
 Hochiminh City
Vietnam
 Tel. +84 8/39143042
 Fax +84 8/38217843
 bhthien@camozzi.com.vn
 www.camozzi.com.vn

Camozzi
in the worldOther
countries

See our distributors network on
 Camozzi website within the section
Contacts / Camozzi Worldwide