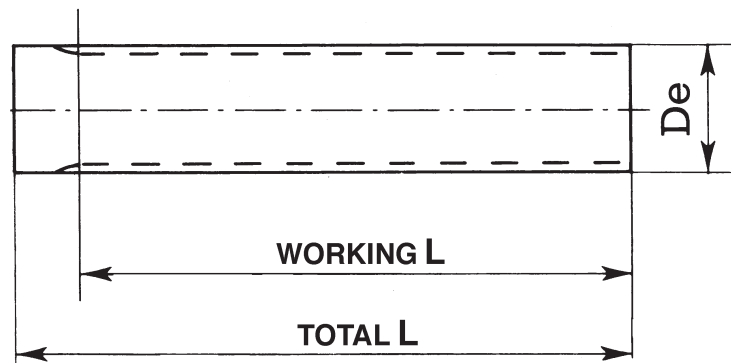


# "CT" BARS FOR "AT" POLYURETHANE BELTS



N.B. CT 5 - CT 10 pitch bars are only manufactured in Aluminium suitable for hard oxidation to thickness.

## CT5 (5 mm pitch)

DESCRIPTION	No. of TEETH	De EXTERNAL	L WORKING	L TOTAL
CT5-12	12	17.85	140	140
CT5-13	13	19.45	140	140
CT5-14	14	21.05	140	140
CT5-15	15	22.65	140	140
CT5-16	16	24.20	140	140
CT5-18	18	27.40	140	140
CT5-19	19	29.00	140	140
CT5-20	20	30.60	160	160
CT5-21	21	32.30	160	160
CT5-22	22	33.85	160	160
CT5-23	23	35.45	160	160
CT5-24	24	37.00	160	160
CT5-25	25	38.55	160	160
CT5-26	26	40.20	160	160
CT5-28	28	43.25	160	160
CT5-30	30	46.55	160	160
CT5-32	32	49.70	160	160
CT5-34	34	52.85	160	160
CT5-36	36	56.05	160	160
CT5-38	38	59.25	160	160
CT5-40	40	62.45	160	160
CT5-42	42	65.60	160	160
CT5-44	44	68.80	160	160
CT5-46	46	72.00	160	160
CT5-48	48	75.15	160	160
CT5-52	52	81.55	160	160
CT5-56	56	87.90	160	160
CT5-60	60	94.25	160	160
CT5-64	64	100.65	160	160
CT5-72	72	113.35	160	160

## CT10 (10 mm pitch)

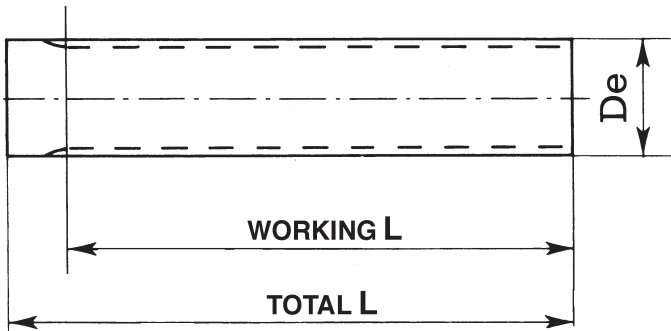
DESCRIPTION	No. of TEETH	De EXTERNAL	L WORKING	L TOTAL
CT10-15	15	45.90	160	160
CT10-16	16	49.140	160	160
CT10-18	18	55.45	160	160
CT10-19	19	58.65	160	160
CT10-20	20	61.80	160	160
CT10-21	21	65.00	160	160
CT10-22	22	68.20	160	160
CT10-23	23	71.35	160	160
CT10-24	24	74.55	160	160
CT10-25	25	77.75	160	160
CT10-26	26	80.90	160	160
CT10-28	28	87.25	160	160
CT10-30	30	93.65	160	160
CT10-32	32	100.00	160	160
CT10-34	34	106.40	160	160
CT10-36	36	112.75	160	160
CT10-38	38	119.10	160	160
CT10-40	40	125.45	160	160
CT10-42	42	131.85	160	160
CT10-44	44	138.20	160	160
CT10-46	46	144.55	160	160
CT10-48	48	150.95	160	160
CT10-52	52	163.65	160	160
CT10-56	56	176.40	160	160
CT10-60	60	189.15	160	160

CT20 pitch pulleys and bars are manufactured on request

# " T " B A R S

## T 5 (5 mm pitch)

DESCRIPTION	No. of TEETH	De EXTERNAL	L WORKING	L TOTAL
T5-10	10	15.05	125	140
T5-11	11	16.65	125	140
T5-12	12	18.25	125	140
T5-13	13	19.85	125	140
T5-14	14	21.45	140	140
T5-15	15	23.05	140	140
T5-16	16	24.60	140	140
T5-17	17	26.20	140	140
T5-18	18	27.00	140	140
T5-19	19	29.40	140	140
T5-20	20	31.00	160	160
T5-21	21	32.70	160	160
T5-22	22	34.15	160	160
T5-23	23	35.85	160	160
T5-24	24	37.40	160	160
T5-25	25	38.95	160	160
T5-26	26	40.60	160	160
T5-27	27	42.20	160	160
T5-28	28	43.75	160	160
T5-29	29	45.35	160	160
T5-30	30	46.95	160	160
T5-32	32	50.10	160	160
T5-34	34	53.25	160	160
T5-35	35	54.85	160	160
T5-36	36	56.45	160	160
T5-37	37	58.06	160	160
T5-38	38	59.65	160	160
T5-40	40	62.85	160	160
T5-42	42	66.00	160	160
T5-44	44	69.20	160	160
T5-45	45	70.80	160	160
T5-46	46	72.40	160	160
T5-48	48	75.55	160	160
T5-50	50	78.75	160	160
T5-60	60	94.65	160	160
T5-72	72	113.75	160	160
T5-80	80	126.48	160	160
T5-90	90	142.40	160	160
T5-100	100	158.31	160	160



N.B. T 2.5 - T 5 - T 10 pitch bars are only manufactured in Aluminium suitable for hard anodising.

T20 pitch pulleys and bars are manufactured, on request

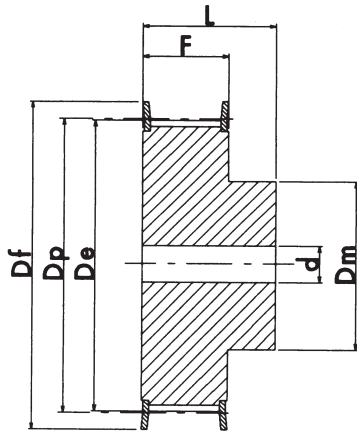
## T 2.5 (2.5 mm pitch)

DESCRIPTION	No. of TEETH	De EXTERNAL	L WORKING	L TOTAL
T2.5-10	10	7.45	50	75
T2.5-12	12	9.00	50	75
T2.5-13	13	9.80	50	75
T2.5-14	14	10.60	50	75
T2.5-15	15	11.40	50	75
T2.5-16	16	12.20	50	75
T2.5-17	17	13.00	50	75
T2.5-18	18	13.80	50	75
T2.5-19	19	14.60	90	120
T2.5-20	20	15.40	90	120
T2.5-21	21	16.20	90	120
T2.5-22	22	17.00	125	140
T2.5-24	24	18.55	125	140
T2.5-26	26	20.15	125	140
T2.5-27	27	20.95	125	140
T2.5-28	28	21.75	125	140
T2.5-29	29	22.55	125	140
T2.5-30	30	23.35	125	140
T2.5-32	32	24.95	125	140
T2.5-34	34	26.55	125	140
T2.5-35	35	27.35	132	140
T2.5-36	36	28.10	132	140
T2.5-38	38	29.70	140	140
T2.5-40	40	31.30	140	140
T2.5-42	42	32.90	140	140
T2.5-44	44	34.50	140	140
T2.5-45	45	35.30	140	140
T2.5-48	48	37.70	140	140
T2.5-50	50	39.29	160	160
T2.5-60	60	47.25	160	160
T2.5-65	65	51.20	160	160
T2.5-70	70	55.20	160	160
T2.5-72	72	56.80	160	160
T2.5-90	90	71.12	160	160
T2.5-100	100	79.08	160	160

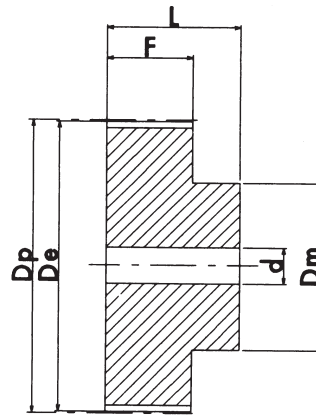
## T 10 (10 mm pitch)

DESCRIPTION	No. of TEETH	De EXTERNAL	L WORKING	L TOTAL
T10-10	10	29.98	140	140
T10-11	11	33.16	140	140
T10-12	12	36.35	140	140
T10-13	13	39.55	140	140
T10-14	14	42.70	160	160
T10-15	15	45.90	160	160
T10-16	16	49.10	160	160
T10-17	17	52.25	160	160
T10-18	18	55.45	160	160
T10-19	19	58.65	160	160
T10-20	20	61.80	160	160
T10-21	21	65.00	160	160
T10-22	22	68.15	160	160
T10-23	23	71.35	160	160
T10-24	24	74.55	160	160
T10-26	26	80.90	160	160
T10-28	28	87.25	160	160
T10-30	30	93.65	160	160
T10-32	32	100.00	160	160
T10-34	34	106.40	160	160
T10-36	36	112.75	160	160
T10-38	38	119.10	160	160
T10-40	40	125.45	160	160
T10-45	45	141.40	160	160
T10-48	48	150.95	160	160
T10-60	60	189.15	160	160
T10-72	72	227.29	160	160

# "CT" PULLEYS FOR "AT" POLYURETHANE BELTS



EXECUTION 1F



EXECUTION 2

How to identify a pulley - Example:  
**21 CT5 25**

Pulley length (mm) **21**  
 Pulley pitch (mm) **CT5**  
 No. of teeth on pulley **25**

material: **ALUMINIUM**

## CT5 (5 mm pitch) DESIGNED FOR 10 mm WIDE BELT

ALUMINIUM

DESCRIPTION	EXEC.	No. of TEETH	Dp	De	Df	Dm	F	L	d	FLANGE No.
21 CT5 12	1F	12	19.10	17.85	23.0	11	15	21	-	1
21 CT5 14	1F	14	22.29	21.05	25.0	13	15	21	-	2
21 CT5 15	1F	15	23.88	22.65	28.0	16	15	21	6	4
21 CT5 16	1F	16	25.47	24.20	32.0	18	15	21	6	5
21 CT5 18	1F	18	28.65	27.40	32.0	20	15	21	6	6
21 CT5 19	1F	19	30.25	29.00	36.0	22	15	21	6	8
21 CT5 20	1F	20	31.83	30.60	36.0	23	15	21	6	8
21 CT5 22	1F	22	35.02	33.85	38.0	24	15	21	6	9
21 CT5 24	1F	24	38.21	37.00	42.0	26	15	21	6	13
21 CT5 25	1F	25	39.80	38.60	44.0	26	15	21	6	12
21 CT5 26	1F	26	41.39	40.20	44.0	26	15	21	6	12
21 CT5 27	1F	27	42.98	41.80	48.0	30	15	21	8	11
21 CT5 28	1F	28	44.58	43.35	48.0	32	15	21	8	11
21 CT5 30	1F	30	47.76	46.55	51.0	34	15	21	8	16
21 CT5 32	1F	32	50.94	49.70	54.0	38	15	21	8	18
21 CT5 36	1F	36	57.31	56.05	64.0	38	15	21	8	23
21 CT5 40	1F	40	63.66	62.45	66.5	40	15	21	8	24
21 CT5 42	1F	42	66.86	65.60	70.0	40	15	21	8	26
21 CT5 44	2	44	70.05	68.80	-	45	15	21	8	-
21 CT5 48	2	48	76.42	75.15	-	50	15	21	8	-
21 CT5 60	2	60	95.52	94.25	-	65	15	21	8	-

# "CT" PULLEYS FOR "AT" POLYURETHANE BELTS

## CT5 (5 mm pitch) DESIGNED FOR 16 mm WIDE BELT

ALUMINIUM	DESCRIPTION	EXEC.	No. of TEETH	Dp	De	Df	Dm	F	L	d	FLANGE No.
	27 CT5 12	1F	12	19.10	17.85	23.0	11	21	27	-	1
27 CT5 14	1F	14	22.29	21.05	25.0	13	21	27	-	2	
27 CT5 15	1F	15	23.88	22.65	28.0	16	21	27	6	4	
27 CT5 16	1F	16	25.47	24.20	32.0	18	21	27	6	5	
27 CT5 18	1F	18	28.65	27.40	32.0	20	21	27	6	6	
27 CT5 19	1F	19	30.25	29.00	36.0	22	21	27	6	8	
27 CT5 20	1F	20	31.83	30.60	36.0	23	21	27	6	8	
27 CT5 22	1F	22	35.02	33.85	38.0	24	21	27	6	9	
27 CT5 24	1F	24	38.21	37.00	42.0	26	21	27	6	13	
27 CT5 25	1F	25	39.80	38.60	44.0	26	21	27	6	12	
27 CT5 26	1F	26	41.39	40.20	44.0	26	21	27	6	12	
27 CT5 27	1F	27	42.98	41.80	48.0	30	21	27	8	11	
27 CT5 28	1F	28	44.58	43.35	48.0	32	21	27	8	11	
27 CT5 30	1F	30	47.76	46.55	51.0	34	21	27	8	16	
27 CT5 32	1F	32	50.94	49.70	54.0	38	21	27	8	18	
27 CT5 36	1F	36	57.31	56.05	64.0	38	21	27	8	23	
27 CT5 40	1F	40	63.66	62.45	66.5	40	21	27	8	24	
27 CT5 42	1F	42	66.86	65.60	70	40	21	27	8	26	
27 CT5 44	2	44	70.05	68.80	-	45	21	27	8	-	
27 CT5 48	2	48	76.42	75.15	-	50	21	27	8	-	
27 CT5 60	2	60	95.52	94.25	-	65	21	27	8	-	

## CT5 (5 mm pitch) DESIGNED FOR 25 mm WIDE BELT

ALUMINIUM	DESCRIPTION	EXEC.	No. of TEETH	Dp	De	Df	Dm	F	L	d	FLANGE No.
	36 CT5 12	1F	12	19.10	17.85	23.0	11	30	36	-	1
36 CT5 14	1F	14	22.29	21.05	25.0	13	30	36	-	2	
36 CT5 15	1F	15	23.88	22.65	28.0	16	30	36	6	4	
36 CT5 16	1F	16	25.47	24.20	32.0	18	30	36	6	5	
36 CT5 18	1F	18	28.65	27.40	32.0	20	30	36	6	6	
36 CT5 19	1F	19	30.25	29.00	36.0	22	30	36	6	8	
36 CT5 20	1F	20	31.83	30.60	36.0	23	30	36	6	8	
36 CT5 22	1F	22	35.02	33.85	38.0	24	30	36	6	9	
36 CT5 24	1F	24	38.21	37.00	42.0	26	30	36	6	13	
36 CT5 25	1F	25	39.80	38.60	44.0	26	30	36	6	12	
36 CT5 26	1F	26	41.39	40.20	44.0	26	30	36	6	12	
36 CT5 27	1F	27	42.98	41.80	48.0	30	30	36	8	11	
36 CT5 28	1F	28	44.58	43.35	48.0	32	30	36	8	11	
36 CT5 30	1F	30	47.76	46.55	51.0	34	30	36	8	16	
36 CT5 32	1F	32	50.94	49.70	54.0	38	30	36	8	18	
36 CT5 36	1F	36	57.31	56.05	64.0	38	30	36	8	23	
36 CT5 40	1F	40	63.66	62.45	66.5	40	30	36	8	24	
36 CT5 42	1F	42	66.86	65.60	70.0	40	30	36	8	26	
36 CT5 44	2	44	70.05	68.80	-	45	30	36	8	-	
36 CT5 48	2	48	76.42	75.15	-	50	30	36	8	-	
36 CT5 60	2	60	95.52	94.25	-	65	30	36	8	-	

CT20 pitch pulleys and bars are manufactured on request.

# "CT" PULLEYS FOR "AT" POLYURETHANE BELTS

CT10 (10 mm pitch) DESIGNED FOR 16 mm WIDE BELT

ALUMINIUM	DESCRIPTION	EXEC.	No. of TEETH	Dp	De	Df	Dm	F	L	d	FLANGE No.
	31 CT10 15	1F	15	47.75	45.90	51	32	21	31	8	16
	31 CT10 16	1F	16	50.93	49.05	54	35	21	31	8	18
	31 CT10 18	1F	18	57.29	55.45	60	40	21	31	8	21
	31 CT10 19	1F	19	60.48	58.60	66.5	44	21	31	8	24
	31 CT10 20	1F	20	63.66	61.80	66.5	46	21	31	8	24
	31 CT10 22	1F	22	70.03	68.15	75	52	21	31	8	27
	31 CT10 24	1F	24	76.39	74.55	83	58	21	31	8	29
	31 CT10 25	1F	25	79.58	77.70	83	60	21	31	8	29
	31 CT10 26	1F	26	82.76	80.90	87	60	21	31	8	31
	31 CT10 27	1F	27	85.95	84.10	91	60	21	31	8	32
31 CT10 28	1F	28	89.12	87.25	93	60	21	31	8	33	
31 CT10 30	1F	30	95.49	93.65	102	60	21	31	8	35	
31 CT10 32	1F	32	101.86	100.00	106	65	21	31	10	38	
31 CT10 36	1F	36	114.59	112.75	119	70	21	31	10	43	
31 CT10 40	1F	40	127.32	125.45	131	80	21	31	10	47	
31 CT10 44	2	44	140.05	138.20	-	88	21	31	10	-	
31 CT10 48	2	48	152.78	150.95	-	95	21	31	16	-	
31 CT10 60	2	60	190.98	189.10	-	110	21	31	16	-	

CT10 (10 mm pitch) DESIGNED FOR 25 mm WIDE BELT

ALUMINIUM	DESCRIPTION	EXEC.	No. of TEETH	Dp	De	Df	Dm	F	L	d	FLANGE No.
	40 CT10 15	1F	15	47.75	45.90	51	32	30	40	8	16
	40 CT10 16	1F	16	50.93	49.05	54	35	30	40	8	18
	40 CT10 18	1F	18	57.29	55.45	60	40	30	40	8	21
	40 CT10 19	1F	19	60.48	58.60	66.5	44	30	40	8	24
	40 CT10 20	1F	20	63.66	61.80	66.5	46	30	40	8	24
	40 CT10 22	1F	22	70.03	68.15	75	52	30	40	8	27
	40 CT10 24	1F	24	76.39	74.55	83	58	30	40	8	29
	40 CT10 25	1F	25	79.58	77.70	83	60	30	40	8	29
	40 CT10 26	1F	26	82.76	80.90	87	60	30	40	8	31
	40 CT10 27	1F	27	85.95	84.10	91	60	30	40	8	32
40 CT10 28	1F	28	89.12	87.25	93	60	30	40	8	33	
40 CT10 30	1F	30	95.49	93.65	102	60	30	40	8	35	
40 CT10 32	1F	32	101.86	100.00	106	65	30	40	10	38	
40 CT10 36	1F	36	114.59	112.75	119	70	30	40	10	43	
40 CT10 40	1F	40	127.32	125.45	131	80	30	40	10	47	
40 CT10 44	2	44	140.05	138.20	-	88	30	40	10	-	
40 CT10 48	2	48	152.78	150.95	-	95	30	40	16	-	
40 CT10 60	2	60	190.98	189.10	-	110	30	40	16	-	

CT20 pitch pulleys and bars are manufactured on request.

# "CT" PULLEYS FOR "AT" POLYURETHANE BELTS

## CT10 (10 mm pitch) DESIGNED FOR 32 mm WIDE BELT

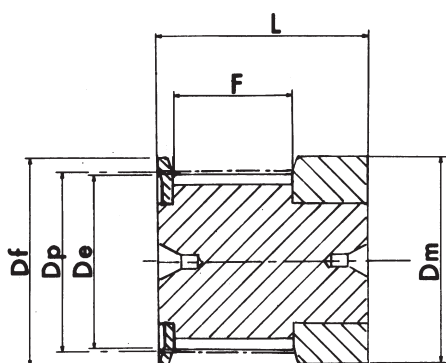
ALUMINIUM	DESCRIPTION	EXEC.	No. of TEETH	Dp	De	Df	Dm	F	L	d	FLANGE No.
	47 CT10 18	1F	18	57.29	55.45	60	40	37	47	10	21
	47 CT10 19	1F	19	60.48	58.60	66.5	44	37	47	10	24
	47 CT10 20	1F	20	63.66	61.80	66.5	46	37	47	12	24
	47 CT10 22	1F	22	70.03	68.15	75	52	37	47	12	27
	47 CT10 24	1F	24	76.39	74.55	83	58	37	47	12	29
	47 CT10 25	1F	25	79.58	77.70	83	60	37	47	12	29
	47 CT10 26	1F	26	82.76	80.90	87	60	37	47	12	31
	47 CT10 27	1F	27	85.95	84.10	91	60	37	47	12	32
	47 CT10 28	1F	28	89.12	87.25	93	60	37	47	12	33
	47 CT10 30	1F	30	95.49	93.65	102	60	37	47	12	35
	47 CT10 32	1F	32	101.86	100.00	106	65	37	47	12	38
	47 CT10 36	1F	36	114.59	112.75	119	70	37	47	16	43
	47 CT10 40	1F	40	127.32	125.45	131	80	37	47	16	47
	47 CT10 44	2	44	140.05	138.20	-	88	37	47	16	-
	47 CT10 48	2	48	152.78	150.95	-	95	37	47	16	-
47 CT10 60	2	60	190.98	189.10	-	110	37	47	16	-	

## CT10 (10 mm pitch) DESIGNED FOR 50 mm WIDE BELT

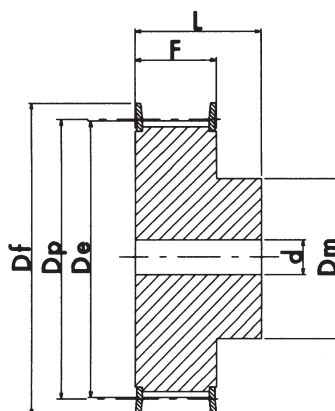
ALUMINIUM	DESCRIPTION	EXEC.	No. of TEETH	Dp	De	Df	Dm	F	L	d	FLANGE No.
	66 CT10 18	1F	18	57.29	55.45	60	40	56	66	10	21
	66 CT10 19	1F	19	60.48	58.60	66.5	44	56	66	10	24
	66 CT10 20	1F	20	63.66	61.80	66.5	46	56	66	12	24
	66 CT10 22	1F	22	70.03	68.15	75	52	56	66	12	27
	66 CT10 24	1F	24	76.39	74.55	83	58	56	66	12	29
	66 CT10 25	1F	25	79.58	77.70	83	60	56	66	12	29
	66 CT10 26	1F	26	82.76	80.90	87	60	56	66	12	31
	66 CT10 27	1F	27	85.95	84.10	91	60	56	66	12	32
	66 CT10 28	1F	28	89.12	87.25	93	60	56	66	12	33
	66 CT10 30	1F	30	95.49	93.65	102	60	56	66	12	35
	66 CT10 32	1F	32	101.86	100.00	106	65	56	66	12	38
	66 CT10 36	1F	36	114.59	112.75	119	70	56	66	16	43
	66 CT10 40	1F	40	127.32	125.45	131	80	56	66	16	47
	66 CT10 44	2	44	140.05	138.20	-	88	56	66	16	-
	66 CT10 48	2	48	152.78	150.95	-	95	56	66	16	-
66 CT10 60	2	60	190.98	189.10	-	110	56	66	16	-	

CT20 pitch pulleys and bars are manufactured on request.

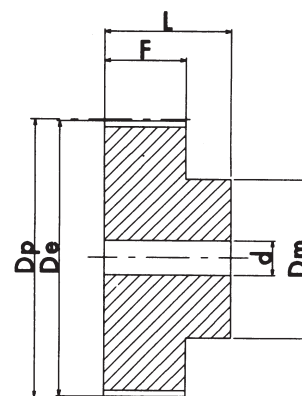
# " T " P U L L E Y S



EXECUTION 0F



EXECUTION 1F



EXECUTION 2

## How to identify a pulley – Example: 31 T10 25

Pulley width (mm) 31

Pulley pitch (mm) T10

No. of teeth on pulley 25

material: ALUMINIUM

T20 pitch pulleys and bars are manufactured on request.

### T 2.5 (2.5 mm pitch) DESIGNED FOR 6 mm WIDE BELTS

ALUMINIUM

DESCRIPTION	EXEC.	No. of TEETH	Dp	De	Df	Dm	F	L	d	FLANGE No.
16 T2.5 12	0F	12	9.60	9.00	13.0	13	9	16	-	501
16 T2.5 14	0F	14	11.20	10.60	15.0	15	9	16	-	502
16 T2.5 15	0F	15	12.00	11.40	15.0	15	9	16	-	502
16 T2.5 16	0F	16	12.80	12.20	16.0	16	9	16	-	503
16 T2.5 16	1F	18	14.40	13.80	17.5	10	10	16	-	504
16 T2.5 19	1F	19	15.20	14.60	20.0	10	10	16	-	505
16 T2.5 20	1F	20	16.00	15.40	20.0	11	10	16	-	505
16 T2.5 22	1F	22	17.60	17.00	22.0	11	10	16	-	512
16 T2.5 24	1F	24	19.15	18.55	22.0	12	10	16	4	512
16 T2.5 25	1F	25	19.95	19.35	25.0	13	10	16	4	506
16 T2.5 26	1F	26	20.75	20.15	26.0	14	10	16	4	507
16 T2.5 28	1F	28	22.35	21.75	26.0	14	10	16	4	507
16 T2.5 30	1F	30	23.95	23.35	26.0	16	10	16	6	508
16 T2.5 32	1F	32	25.55	24.95	32.0	16	10	16	6	509
16 T2.5 36	1F	36	28.75	28.10	36.0	20	10	16	6	510
16 T2.5 40	1F	40	31.90	31.30	38.0	22	10	16	6	511
16 T2.5 44	2	44	35.10	34.50	-	24	10	16	6	-
16 T2.5 48	2	48	38.30	37.70	-	26	10	16	6	-
16 T2.5 60	2	60	47.85	47.25	-	34	10	16	8	-

# " T " P U L L E Y S

## T 5 (5 mm pitch) DESIGNED FOR 10 mm WIDE BELTS

ALUMINIUM	DESCRIPTION	EXEC.	No. of TEETH	Dp	De	Df	Dm	F	L	d	FLANGE No.
	21 T5 10	1F	10	15.92	15.05	19.5	8	15	21	-	3
	21 T5 12	1F	12	19.10	18.25	23.0	11	15	21	-	1
	21 T5 14	1F	14	22.29	21.45	25.0	13	15	21	-	2
	21 T5 15	1F	15	23.88	23.05	28.0	16	15	21	6	4
	21 T5 16	1F	16	25.47	24.60	32.0	18	15	21	6	5
	21 T5 18	1F	18	28.65	27.80	32.0	20	15	21	6	6
	21 T5 19	1F	19	30.25	29.40	36.0	22	15	21	6	8
	21 T5 20	1F	20	31.83	31.00	36.0	23	15	21	6	8
	21 T5 22	1F	22	35.02	34.15	38.0	24	15	21	6	9
	21 T5 24	1F	24	38.21	37.40	42.0	26	15	21	6	13
	21 T5 25	1F	25	39.80	38.95	44.0	26	15	21	6	12
21 T5 26	1F	26	41.39	40.60	44.0	26	15	21	6	12	
21 T5 27	1F	27	42.98	42.20	48.0	30	15	21	8	11	
21 T5 28	1F	28	44.58	43.75	48.0	32	15	21	8	11	
21 T5 30	1F	30	47.76	46.95	51.0	34	15	21	8	16	
21 T5 32	1F	32	50.94	50.10	54.0	38	15	21	8	18	
21 T5 36	1F	36	57.31	56.45	64.0	38	15	21	8	23	
21 T5 40	1F	40	63.66	62.85	66.5	40	15	21	8	24	
21 T5 42	1F	42	66.86	66.00	70.0	40	15	21	8	26	
21 T5 44	2	44	70.05	69.20	-	45	15	21	8	-	
21 T5 48	2	48	76.42	75.55	-	50	15	21	8	-	
21 T5 60	2	60	95.52	94.65	-	65	15	21	8	-	

## T 5 (5 mm pitch) DESIGNED FOR 16 mm WIDE BELTS

ALUMINIUM	DESCRIPTION	EXEC.	No. of TEETH	Dp	De	Df	Dm	F	L	d	FLANGE No.
	27 T5 10	1F	10	15.92	15.05	19.5	8	21	27	-	3
	27 T5 12	1F	12	19.10	18.25	23.0	11	21	27	-	1
	27 T5 14	1F	14	22.29	21.45	25.0	13	21	27	-	2
	27 T5 15	1F	15	23.88	23.05	28.0	16	21	27	6	4
	27 T5 16	1F	16	25.47	24.60	32.0	18	21	27	6	5
	27 T5 18	1F	18	28.65	27.80	32.0	20	21	27	6	6
	27 T5 19	1F	19	30.25	29.40	36.0	22	21	27	6	8
	27 T5 20	1F	20	31.83	31.00	36.0	23	21	27	6	8
	27 T5 22	1F	22	35.02	34.15	38.0	24	21	27	6	9
	27 T5 24	1F	24	38.21	37.40	42.0	26	21	27	6	13
	27 T5 25	1F	25	39.80	38.95	44.0	26	21	27	6	12
27 T5 26	1F	26	41.39	40.60	44.0	26	21	27	6	12	
27 T5 27	1F	27	42.98	42.20	48.0	30	21	27	8	11	
27 T5 28	1F	28	44.58	43.75	48.0	32	21	27	8	11	
27 T5 30	1F	30	47.76	46.95	51.0	34	21	27	8	16	
27 T5 32	1F	32	50.94	50.10	54.0	38	21	27	8	18	
27 T5 36	1F	36	57.31	56.45	64.0	38	21	27	8	23	
27 T5 40	1F	40	63.66	62.85	66.5	40	21	27	8	24	
27 T5 42	1F	42	66.86	66.00	70.0	40	21	27	8	26	
27 T5 44	2	44	70.05	69.20	-	45	21	27	8	-	
27 T5 48	2	48	76.42	75.55	-	50	21	27	8	-	
27 T5 60	2	60	95.52	94.65	-	65	21	27	8	-	

## T 5 (5 mm pitch) DESIGNED FOR 25 mm WIDE BELTS

ALUMINIUM	DESCRIPTION	EXEC.	No. of TEETH	Dp	De	Df	Dm	F	L	d	FLANGE No.
	36 T5 10	1F	10	15.92	15.05	19.5	8	30	36	-	3
	36 T5 12	1F	12	19.10	18.25	23.0	11	30	36	-	1
	36 T5 14	1F	14	22.29	21.45	25.0	13	30	36	-	2
	36 T5 15	1F	15	23.88	23.05	28.0	16	30	36	6	4
	36 T5 16	1F	16	25.47	24.60	32.0	18	30	36	6	5
	36 T5 18	1F	18	28.65	27.80	32.0	20	30	36	6	6
	36 T5 19	1F	19	30.25	29.40	36.0	22	30	36	6	8
	36 T5 20	1F	20	31.83	31.00	36.0	23	30	36	6	8
	36 T5 22	1F	22	35.02	34.15	38.0	24	30	36	6	9
	36 T5 24	1F	24	38.21	37.40	42.0	26	30	36	8	13
	36 T5 25	1F	25	39.80	38.95	44.0	26	30	36	8	12
36 T5 26	1F	26	41.39	40.60	44.0	26	30	36	8	12	
36 T5 27	1F	27	42.98	42.20	48.0	30	30	36	8	11	
36 T5 28	1F	28	44.58	43.75	48.0	32	30	36	8	11	
36 T5 30	1F	30	47.76	46.95	51.0	34	30	36	8	16	
36 T5 32	1F	32	50.94	50.10	54.0	38	30	36	8	18	
36 T5 36	1F	36	57.31	56.45	64.0	38	30	36	8	23	
36 T5 40	1F	40	63.66	62.85	66.5	40	30	36	8	24	
36 T5 42	1F	42	66.86	66.00	70.0	40	30	36	8	26	
36 T5 44	2	44	70.05	69.20	-	45	30	36	8	-	
36 T5 48	2	48	76.42	75.55	-	50	30	36	8	-	
36 T5 60	2	60	95.52	94.65	-	65	30	36	8	-	

T20 pitch pulleys and bars are manufactured on request.



# " T " P U L L E Y S

## T 10 (10 mm pitch) DESIGNED FOR 16 mm WIDE BELTS

ALUMINIUM	DESCRIPTION	EXEC.	No. of TEETH	Dp	De	Df	Dm	F	L	d	FLANGE No.
	31 T10 12	1F	12	38.20	36.35	42	28	21	31	6	13
	31 T10 14	1F	14	44.56	42.70	48	32	21	31	8	11
	31 T10 15	1F	15	47.75	45.90	51	32	21	31	8	16
	31 T10 16	1F	16	50.93	49.10	54	35	21	31	8	18
	31 T10 18	1F	18	57.29	55.45	60	40	21	31	8	21
	31 T10 19	1F	19	60.48	58.65	66	44	21	31	8	24
	31 T10 20	1F	20	63.66	61.80	66	46	21	31	8	24
	31 T10 22	1F	22	70.03	68.20	75	52	21	31	8	27
	31 T10 24	1F	24	76.39	74.55	83	58	21	31	8	29
	31 T10 25	1F	25	79.58	77.75	83	60	21	31	8	29
	31 T10 26	1F	26	82.76	80.90	87	60	21	31	8	31
31 T10 27	1F	27	85.95	84.10	91	60	21	31	8	32	
31 T10 28	1F	28	89.12	87.25	93	60	21	31	8	33	
31 T10 30	1F	30	95.49	93.65	102	60	21	31	8	35	
31 T10 32	1F	32	101.86	100.00	106	65	21	31	10	38	
31 T10 36	1F	36	114.59	112.75	119	70	21	31	10	43	
31 T10 40	1F	40	127.32	125.45	131	80	21	31	10	47	
31 T10 44	2	44	140.05	138.20	-	88	21	31	10	-	
31 T10 48	2	48	152.78	150.95	-	95	21	31	16	-	
31 T10 60	2	60	190.98	189.10	-	110	21	31	16	-	

## T 10 (10 mm pitch) DESIGNED FOR 25 mm WIDE BELTS

ALUMINIUM	DESCRIPTION	EXEC.	No. of TEETH	Dp	De	Df	Dm	F	L	d	FLANGE No.
	40 T10 12	1F	12	38.20	36.35	42	28	30	40	6	13
	40 T10 14	1F	14	44.56	42.70	48	32	30	40	8	11
	40 T10 15	1F	15	47.75	45.90	51	32	30	40	8	16
	40 T10 16	1F	16	50.93	49.10	54	35	30	40	8	18
	40 T10 18	1F	18	57.29	55.45	60	40	30	40	8	21
	40 T10 19	1F	19	60.48	58.65	66	44	30	40	8	24
	40 T10 20	1F	20	63.66	61.80	66	46	30	40	8	24
	40 T10 22	1F	22	70.03	68.20	75	52	30	40	8	27
	40 T10 24	1F	24	76.39	74.55	83	58	30	40	8	29
	40 T10 25	1F	25	79.58	77.75	83	60	30	40	8	29
	40 T10 26	1F	26	82.76	80.90	87	60	30	40	8	31
40 T10 27	1F	27	85.95	84.10	91	60	30	40	8	32	
40 T10 28	1F	28	89.12	87.25	93	60	30	40	8	33	
40 T10 30	1F	30	95.49	93.65	102	60	30	40	8	35	
40 T10 32	1F	32	101.86	100.00	106	65	30	40	10	38	
40 T10 36	1F	36	114.59	112.75	119	70	30	40	10	43	
40 T10 40	1F	40	127.32	125.45	131	80	30	40	10	47	
40 T10 44	2	44	140.05	138.20	-	88	30	40	10	-	
40 T10 48	2	48	152.78	150.95	-	95	30	40	16	-	
40 T10 60	2	60	190.98	189.15	-	110	30	40	16	-	

T20 pitch pulleys and bars are manufactured on request.

# " T " P U L L E Y S

## T 10 (10 mm pitch) DESIGNED FOR 32 mm WIDE BELTS

ALUMINIUM	DESCRIPTION	EXEC.	No. of TEETH	Dp	De	Df	Dm	F	L	d	FLANGE No.
	47 T10 18	1F	18	57.29	55.45	60	40	37	47	10	21
	47 T10 19	1F	19	60.48	58.60	66	44	37	47	10	24
	47 T10 20	1F	20	63.66	61.80	66	46	37	47	12	24
	47 T10 22	1F	22	70.03	68.20	75	52	37	47	12	27
	47 T10 24	1F	24	76.39	74.55	83	58	37	47	12	29
	47 T10 25	1F	25	79.58	77.75	83	60	37	47	12	29
	47 T10 26	1F	26	82.76	80.90	87	60	37	47	12	31
	47 T10 27	1F	27	85.95	84.10	91	60	37	47	12	32
	47 T10 28	1F	28	89.12	87.25	93	60	37	47	12	33
	47 T10 30	1F	30	95.49	93.65	102	60	37	47	12	35
	47 T10 32	1F	32	101.86	100.00	106	65	37	47	12	38
47 T10 36	1F	36	114.59	112.75	119	70	37	47	16	43	
47 T10 40	1F	40	127.32	125.45	131	80	37	47	16	47	
47 T10 44	2	44	140.05	138.20	-	88	37	47	16	-	
47 T10 48	2	48	152.78	150.95	-	95	37	47	16	-	
47 T10 60	2	60	190.98	189.10	-	110	37	47	16	-	

## T 10 (10 mm pitch) DESIGNED FOR 50 mm WIDE BELTS

ALUMINIUM	DESCRIPTION	EXEC.	No. of TEETH	Dp	De	Df	Dm	F	L	d	FLANGE No.
	66 T10 18	1F	18	57.29	55.45	60	40	56	66	10	21
	66 T10 19	1F	19	60.48	58.65	66	44	56	66	10	24
	66 T10 20	1F	20	63.66	61.80	66	46	56	66	12	24
	66 T10 22	1F	22	70.03	68.20	75	52	56	66	12	27
	66 T10 24	1F	24	76.39	74.55	83	58	56	66	12	29
	66 T10 25	1F	25	79.58	77.70	83	60	56	66	12	29
	66 T10 26	1F	26	82.76	80.90	87	60	56	66	12	31
	66 T10 27	1F	27	85.95	84.10	91	60	56	66	12	32
	66 T10 28	1F	28	89.12	87.25	93	60	56	66	12	33
	66 T10 30	1F	30	95.49	93.65	102	60	56	66	12	35
	66 T10 32	1F	32	101.86	100.00	106	65	56	66	12	38
66 T10 36	1F	36	114.59	112.75	119	70	56	66	16	43	
66 T10 40	1F	40	127.32	125.45	131	80	56	66	16	47	
66 T10 44	2	44	140.05	138.20	-	88	56	66	16	-	
66 T10 48	2	48	152.78	150.95	-	95	56	66	16	-	
66 T10 60	2	60	190.98	189.10	-	110	56	66	16	-	

T20 pitch pulleys and bars are manufactured on request.