

Soft start valve Series MC

NEW

Modular
Ports G1/4, G3/8 and G1/2

The Series MC soft start valve is used to avoid damaging people or equipment when pressurising pneumatic systems containing cylinders. The features of these components allow to pressurise an equipment up to 50% of the indicated pressure, after which 100% is reached rapidly. The usual location of the soft start valve is after the FRL unit; in fact the modular design allows for perfect adaptability with all Series MC. A pressure switch can be mounted into the upper part of the unit after removal of the S2610 G1/8 plug. An electrical or pneumatic 3 way valve should be installed before the unit to allow depressurisation.

For modular assembly see page 6.09.002



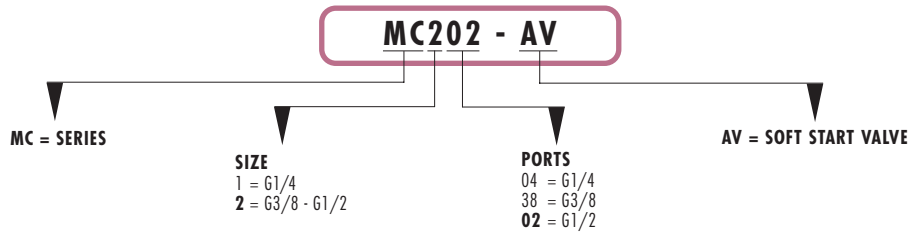
GENERAL DATA

Construction	modular, compact, poppet type			
Materials	zama, NBR, technopolymer			
Ports	G1/4	G3/8	G1/2	
Weight	Kg	0,275	0,566	0,544
Mounting	in-line wall or panel mounting (in any position)			
Operating temperature	0°C ÷ 50°C			
Finish	enamelled			

PNEUMATIC DATA

Operating pressure	3 ÷ 10 bar
Nominal flow (determined at 6 bar with ΔP1)	G1/4 1850 NI/min, G3/8 5000 NI/min, G1/2 5100 NI/min

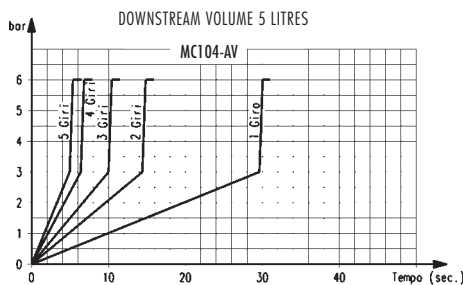
CODING



VARIATION IN PRESSURISATION

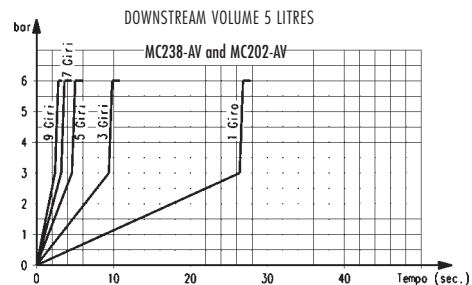
MC104-AV

Pressurisation time by n° of turns of the regulation screw.



MC238-AV and MC202-AV

Pressurisation time by n° of turns of the regulation screw.

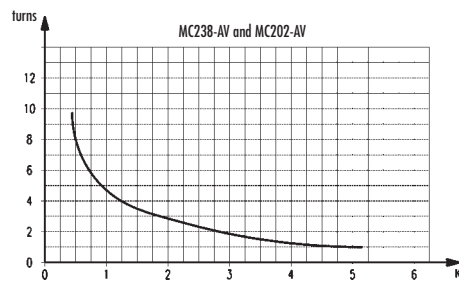
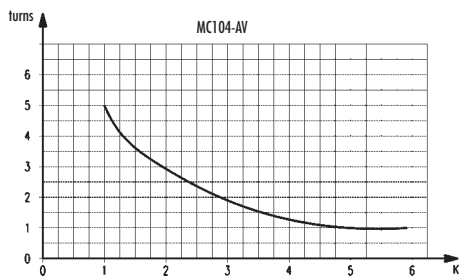


Constant K on the graph indicates the number of turns of the regulation screw required to obtain the required pressurisation time with an inlet pressure of 6 bar. Variations of the inlet pressure can cause deviations of the pressure time by ± 20%.

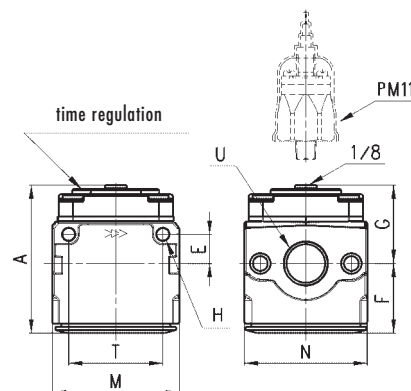
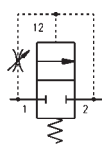
$K = t/V$ where: V = volume of the downstream system in litres ; t = desired pressuring time in seconds

Example: V = 5 litres t = 16 seconds $K = 16/5 = 3,2$

Using in the graph this value K, the number of turns of the regulation screw will be approx. 1,8.



Soft start valve Series MC



DIMENSIONS

Mod.	A	E	F	G	H	M	N	T	U
MC104-AV	59,5	11	28,5	31	4	45	45	35	G1/4
MC238-AV	72,5	14	34	38,5	5	62	60	46	G3/8
MC202-AV	72,5	14	34	38,5	5	62	60	46	G1/2