

Soft start valves Series MX

Ports G3/4 - G1
Modular



- » Security function to maintain the command sequence
- » Opening of the main air path at about 50% of the value of the inlet pressure
- » Pressure switches available on request

The Series MX has been realized to offer a multi-sector solution that guarantees saving in terms of installation time, space and costs. A special configurator, available on Camozzi website at <http://catalogue.camozzi.com> (sec. Configurators), allows the customer to choose the most suitable solution for his application, selecting single components or by configuring assembled FRLs.

These soft start valves allow a gradual increase of the pressure in pneumatic systems. The pressure increases slowly according to the set regulation until it reaches half of the set value, then it increases rapidly. The valve poppet shifts slowly and securely to the open position to prevent sudden and unsafe movements of the pneumatic components in the system.

GENERAL DATA

| | |
|--|--|
| Construction | modular, compact, poppet-type |
| Materials | see TABLE OF MATERIALS (pag. 3/1.40.02) |
| Ports | G3/4 - G1 |
| Weight | 0,65 kg |
| Mounting | in-line wall-mounting (by means of clamps) |
| Operating temperature | -5°C ÷ 50°C up to 16 bar (with the dew point of the fluid lower than 2°C at the min. working temperature) 50°C ÷ 60°C up to 10 bar (with the dew point of the fluid lower than 2°C at the min. working temperature) |
| Operating pressure | 2 ÷ 10 bar |
| Nominal flow (at 6 bar with ΔP 1 bar) | 8500 l/min |
| Fluid | compressed air |

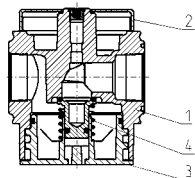
CODING EXAMPLE

| | | | | | |
|-----------|----------|---|------------|---|-----------|
| MX | 3 | - | 3/4 | - | AV |
|-----------|----------|---|------------|---|-----------|

| | |
|------------|--------------------------------|
| MX | SERIES |
| 3 | SIZE: 3 = G3/4 - G1 |
| 3/4 | PORTS: 3/4 = G3/4 1 = G1 |
| AV | SOFT START VALVE |

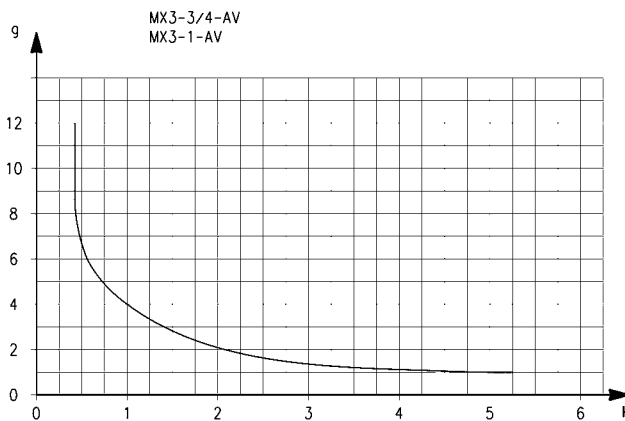
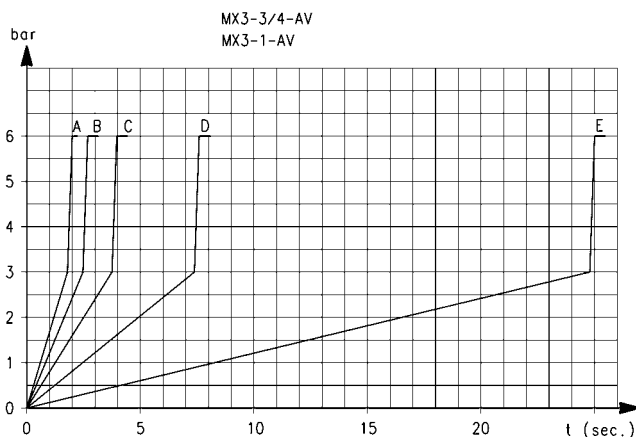
For the assembly of a single component with fixing flanges or wall-mounting, see the section "FRL Series MX Assembled" (pag. 3/1.50.01)

Soft start valves Series MX - materials **New**



| PARTS | MATERIALS |
|------------------------------|-----------------|
| 1 = Body | Aluminium |
| 2 = Covering | Polyacetal |
| 3 = Valve holder plug | Polyacetal |
| 4 = Lower spring | Stainless steel |
| Seals | NBR |

DIAGRAMS FOR PRESSURISATION TIMES



Pressurisation times as to the n° of turns of the regulation screw, with downstream volume of 5 litres. A = 5 turns - B = 4 turns - C = 3 turns - D = 2 turns - E = 1 turn. $K = n^\circ$ of turns of the regulation screw required to obtain the required pressurisation time with an inlet pressure of 6 bar. Variations of the inlet pressure can cause deviations of the pressure time by $\pm 20\%$. $K = t/V$ where: V = volume of the downstream system in litres; t = desired pressuring time in seconds.

EXAMPLE

V = 5 litres

t = 16 seconds

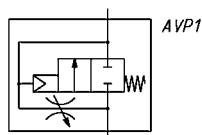
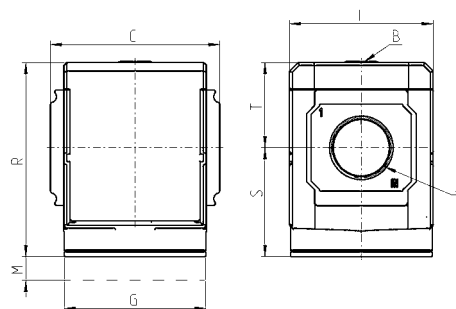
$K = 16/5 = 3,2$

Using in the graph this value K, the number of turns of the regulation screw will be approx. 1,8.

3

TREATMENT

Soft start valves Series MX - dimensions



| Mod. | A | B | C | G | I | M | R | S | T |
|-------------------|------|------|------|----|----|----|-----|------|------|
| MX3-3/4-AV | G3/4 | G1/8 | 89,5 | 75 | 76 | 45 | 102 | 57,5 | 44,5 |
| MX3-1-AV | G1 | G1/8 | 89,5 | 75 | 76 | 45 | 102 | 57,5 | 44,5 |